



RA SA DO ME MO

by Fay and Michael Kanin
based on stories by
Ryunsuke Akutagawa

Director	Rodger Sorensen
Scenic Design	Eric Fielding
Costume Design	Wendy Sanders
Lighting Design	Loraine Edwards
Sound Design	Dave Swenson
Composer	Dave Madden
Makeup & Hair Design	Wendy Sanders
Production Stage Manager	Michelle Rupp

This play is performed simultaneously in ASL and English.

May 16–June 2, 2001
Margetts Theatre 7:30 p.m.
Harris Fine Arts Center
Brigham Young University

College of Fine Arts and Communications
Department of Theatre and Media Arts
Produced by special arrangement with Samuel French, Inc.

Morgan Stanley Dean Witter
Is Proud to Sponsor
The Department of
Theatre & Media Arts

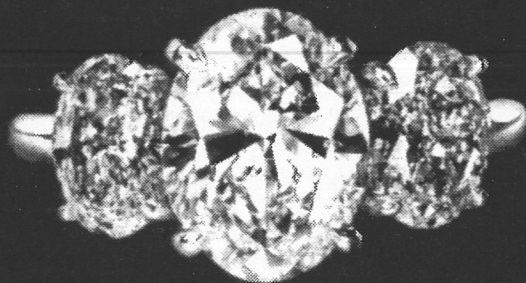
Terry D. Peterson
Senior Vice President, Financial Advisor
Morgan Stanley Dean Witter
3550 North University Avenue, Suite #375
Provo, UT 84604

Toll Free: 888-433-4836 | Local: 801-344-8555

MORGAN STANLEY DEAN WITTER

Morgan Stanley Dean Witter is a service mark of Morgan Stanley Dean Witter and Co. Services are offered through Dean Witter Reynolds, Inc., member SIPC

TRIPLE
COMBINATION

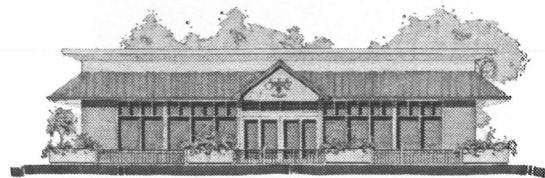


GOLDESIGN

BRIGHAM'S LANDING PROVO 377-3040

The Cast

Character	Performers
Priest	Jesse Ryan Harward, <i>voice</i> Scott Thorsen, <i>signer</i>
Woodcutter	Doug Stewart, <i>voice</i> Jeremy Weber, <i>signer</i>
Wigmaker	Hiroko Ogasahara Hatch, <i>voice</i> Sarah Vogel, <i>signer</i>
Deputy	Amy Jensen, <i>voice</i> Sarah Price, <i>signer</i>
Tajomaru, <i>bandit</i>	Dax Y. Craven, <i>voice</i> Daniel Edwards, <i>signer</i>
Takehitko, <i>husband</i>	Seth Estrada, <i>voice</i> Scott Thorsen, <i>signer</i>
Kinume, <i>wife</i>	Shelley Graham, <i>voice</i> Sarah Price, <i>signer</i>
Mother	Suzanne Sitthichai, <i>voice</i> Sarah Vogel, <i>signer</i>
Medium	Yumi Himeno, Amy Jensen, <i>voices</i> Sarah Vogel, Jeremy Weber, <i>signers</i>



After the performance come have some ice cream at the BYU Creamery on Ninth



Also available:

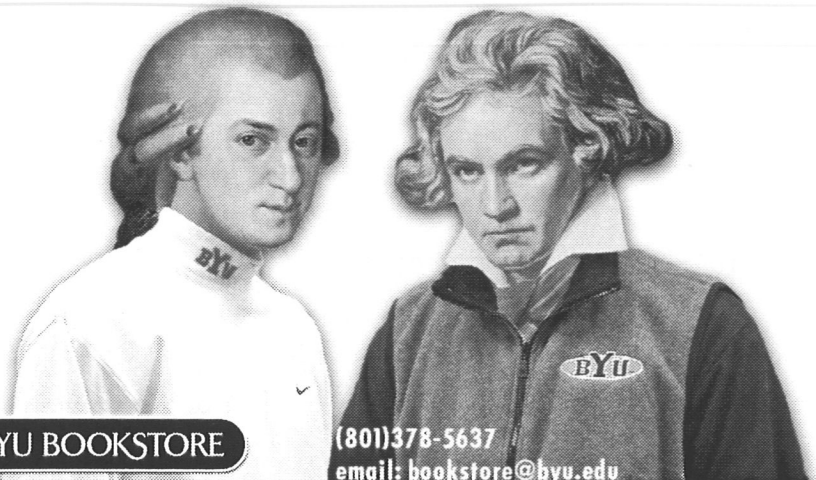
- Frozen Foods
- Dairy Products
- Grill & Ice Cream
- Fresh Meats
- Grocery Items
- Fresh Produce

Open Monday–Saturday, 8 am–midnight

236EG0700

.COMPOSERS

byubookstore.com



(801)378-5637
email: bookstore@byu.edu

The Company

Cristian Bell (Fight Choreographer), from Geneva, NY, is a theatre and media arts major with an acting emphasis. His credits include *Bedroom Farce*, *I Hate Hamlet*, *The Good Samaritan*, and *Richard III*, for which he played the title role.

Richard Clifford (Dramaturg), from Shoshone, ID, is a graduate student in theatre design and technology. He designed makeup for *Burdens of Earth*, *She Stoops to Conquer*, and *Crow and Weasel*. He also designed sets and costumes for *Sy's Girl*.

Dax Y. Craven (Tajomaru), from Arcata, CA, is an English major hoping to go to law school. His credits include *A Midsummer Night's Dream*, *The Cherry Orchard*, and *Much Ado about Nothing*. He dedicates his performance to his grandparents.

Daniel Edwards (Signer: Tajomaru), from Kearns, UT, did preproduction work for Young Company's production of the *The Taste of Sunrise*.

Loraine Edwards (Lighting Designer), from London, England, supervises the stage management program. She designed sets and lights for *The Cherry Orchard* and *Little Women: Part Two*. She is also artistic director for the Actor Repertory Theatre Ensemble.

Seth Adam Estrada (Takehiko), from Thousand Oaks, CA, appeared as Snoopy in *You're a Good Man, Charlie Brown*. He is also a professional inline skater.

Eric Fielding (Scenic Designer) is a resident designer and head of the scenic design program for BYU Theatre. His work was recently seen in *My Fair Lady*, *An Ideal Husband*, *A Midsummer Night's Dream*, and *Richard III*.

Shelley Tuckfield Graham (Kinume), from Aiken, South Carolina, graduated in April with a BA in theatre education. She was most recently seen at BYU as Pem Farnsworth in *A Love Affair with Electrons*.

Jesse Ryan Harward (Priest), from Milpitas, CA, is an acting major. He has appeared in various films and plays at BYU, most recently as Richard Ratcliffe in *Richard III* and Paul in the film *Employee of the Month*.

Hiroko Ogasahara Hatch (Wigmaker, Japanese Cultural & Movement Director), from Japan, graduated from BYU in theatre and media arts with an emphasis in directing and acting. She dedicates her work on *Rashomon* to her son, Tristin.

Yumi Himeno (Medium, Movement Specialist), from Oita, Japan, has a BS in computer science from the University of Utah.

Amy E. Jensen (Deputy), from Provo, UT, is an English and theatre studies major. She was the dramaturg for *The Children's Hour* and puppeteer for *Where the Wild Things Are*. This is her first mainstage performance.

Young Soon Kim (Assistant Stage Manager), from Seoul, Korea, is a theatre education major with an emphasis in directing. Her senior film project was *The Gift*.

Utah Regional Ballet 2000/2001 Season

Legend of Timpanogos
Egyptian Theatre, Ogden Utah
October 26, 2000

Nutcracker
de Jong Concert Hall – Brigham Young University
December 8, 9, 14, 15 & 16, 2000 at 7:30 p.m.
Matinees on Dec. 9 & 16 at 2:00 p.m.

Evening of Brilliance
Ragan Theatre, Utah Valley State College
March 2, 3, 9, 10, 2001 at 7:30 p.m.

Regional Dance America/Pacific Gala Performance
de Jong Concert Hall – Brigham Young University
May 12, 2001

For more information call 801 756.7581

Todd Maetani (Fight Choreographer), from Orem, UT, is a theatre and media arts major with a writing and directing emphasis.

Sarah Price (*Signer*: Kinume, Deputy), from La Mesa, CA, is an English major with a creative writing emphasis. Her credits include *Oliver* for San Diego's Peter Pan Junior Theatre and *The Princess and the Pea*.

Michelle Rupp (Production Stage Manager), from La Crescenta, CA, is a theatre studies major. She assistant stage managed *A Love Affair with Electrons*, designed makeup for *The Magic Flute*, and assisted costume design for *Burdens of Earth*.

Wendy Sanders (Costume Designer), from Salt Lake City, UT, is a MFA candidate. She designed costumes for *An Ideal Husband* and *A Love Affair with Electrons* and designed props for *Children of Eden*. She thanks Bryn Omer and Carolyn Smith for their work and creativity—the costumes could not have been created without them.

Suzanne Sitthichai (Mother), from Central Valley, UT, is a music dance theatre major with an Asian studies minor. She appeared as Salome in *Savior of the World* at the Conference Center Theatre.

Rodger Sorensen (Director), an associate professor at BYU, is responsible for the directing program and serves as Associate Department Chair. His most recent directing credits include *Hill Cumorah Pageant*, *UTAH! The Peacemaker Saga*, *Voices from Black Canyon*, and *The Magic Flute*.

Doug Stewart (Woodcutter), from Illinois, has a BFA in industrial design with a digital emphasis. His credits include *Burdens of Earth* and *The Cherry Orchard* for BYU, *March Tale* for the Castle Theatre, and the film *God's Army*.

David Swenson (Sound Designer), from Sandy, UT, is a theatre and media arts major with an emphasis in sound design. His credits include work for *The Odyssey*, *Children of Eden*, *My Fair Lady*, *Burdens of Earth*, and *Richard III*.

Scott Thorsen (*Signer*: Takehiko, Priest) attends Utah Valley State College. This is his first theatre experience.

Sarah Vogel (*Signer*: Wigmaker, Medium, Mother), from Frederick, MD, is an agribusiness major. Her credits include *Silent Frustrations* and *Voices from Black Canyon*.

Jeremy Weber (*Signer*: Woodcutter, Medium), from Fairfax, VA, is an English major. His credits include *Electra*, *Voices from Black Canyon*, *I Am Jane*, and *The Taste of Sunrise*.

Arit Woolf (Assistant Stage Manager), from Colorado Springs, CO, is a theatre education major. Her credits include Heidi in *Heidi*, Gladys in *The Best Christmas Pageant Ever*, and Wild Thing in *Where the Wild Things Are*.

Jason Yancey (Puppet Designer), from Kennewick, WA, is a theatre arts and Spanish double major. His credits include *Where the Wild Things Are* and *A Love Affair with Electrons*. He is also a scene shop assistant to the master carpenter.