

JOYCE BAKING

a new play by Josh Brady

BYU THEATRE 98-99

PEOPLE MUST HAVE AMUSEMENT AS WELL AS

The SALT LAKE THEATRE  
1860 ——— 1929

ERECTED ON THIS SITE UNDER THE DIRECTION OF  
PRESIDENT BRIGHAM YOUNG  
DEDICATED MARCH 6, 1882



THIS TABLET PLACED BY  
THE CHURCH OF JESUS CHRIST OF LATTER-DAY SAINTS



# JOYCE BAKING

a new play by Josh Brady

---

directed by Eric Samuelson

scenic design by O. Lee Walker and Rory Scanlon

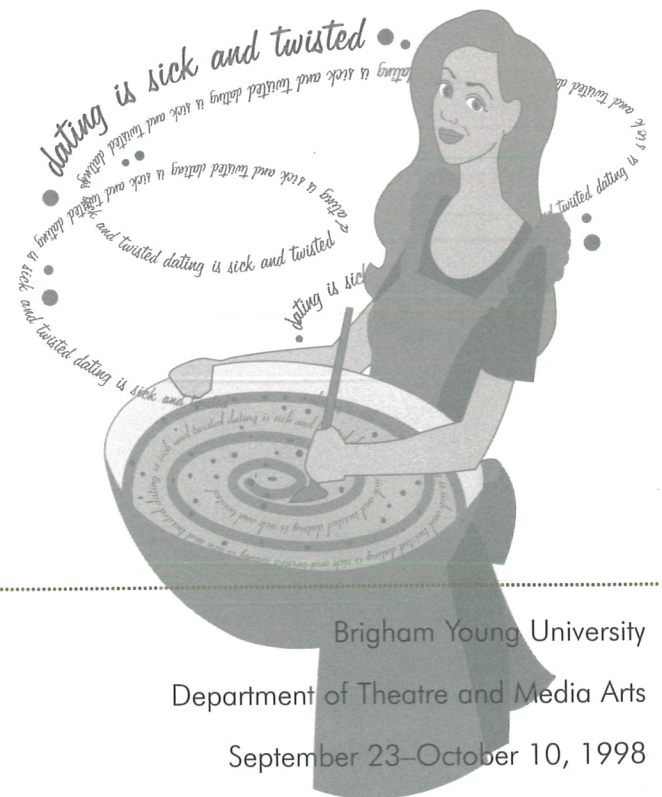
costume design by Melissa Parker

lighting design by Michael G. Handley

sound design by Ian D. Hunter

production stage management by Dana Reyes

---



---

Brigham Young University

Department of Theatre and Media Arts

September 23–October 10, 1998

Pardoe Theatre

---

Cover photo courtesy of the Utah State Historical Society.

Additional photos are available from:

Utah Historical Society

300 Rio Grande

Salt Lake City, UT 84101

(801) 533-3500



## Feel the Spirit of the Holy Land

with Daniel Rona  
You have always wanted to go...  
Now is the time.

- Only Licensed LDS guide in Israel
- 23 tour dates per year
- Experience Egypt, Jordan and Israel
- Customized itineraries

(800) 272-RONA (7662)

E-mail: [travel@israelrona.com](mailto:travel@israelrona.com) or Web: [www.ysite.com/israelrona](http://www.ysite.com/israelrona)

## CAST

in order of appearance

Joyce  
Colleen Baum

Becca  
Jjana Valentiner Morrill

Alex  
Javen Ronald Tanner

*Joyce Baking* is in two acts.

There will be one fifteen minute intermission.

Setting: BYU      Time: Now

This play is entered in the Michael Kanin Playwriting Awards Program and is being considered for the National Student Playwriting Award.

## K C A C T F

THE KENNEDY CENTER  
AMERICAN COLLEGE THEATRE FESTIVAL XXXI

Presented and Produced by  
The John F. Kennedy Center for the Performing Arts  
Supported in Part by  
The Kennedy Center Corporate Fund  
The US Department of Education  
The National Committee for the Performing Arts

This production is entered in the Kennedy Center American College Theater Festival (KC/ACTF). The aims of this national theater education program are to identify and promote quality in college-level theater production. To this end, each production entered is eligible for a response by a regional KC/ACTF representative, and certain students are selected to participate in KC/ACTF programs involving awards, scholarships, and special grants for actors, playwrights, designers, and critics at both the regional and national levels.

Productions entered on the Participating level are eligible for inclusion at the KC/ACTF regional festival and can also be considered for invitation to the KC/ACTF national festival at the John F. Kennedy Center for the Performing Arts in Washington, D.C. in the spring of 1999.

Last year more than 900 productions and 18,000 students participated in the American College Theater Festival nationwide. By entering this production, our department is sharing in the KC/ACTF goals to help college theater grow and to focus attention on the exemplary work produced in college and university theaters across the nation.

Scott Kay  
*Purely the Best.*

PLATINUM  
Scott Kay Platinum.  
Strong. Pure. Precious.  
The most unforgettable  
gift you can give or receive.

Exclusively at Goldsmith's

100 N. University  
Downtown Provo  
375-5220  
Mon. - Sat.  
10 a.m. - 6 p.m.

**Goldsmith Co.**  
JEWELERS

1971-1998  
Celebrating  
27 Years  
of Originality



## CHEERS FOR THE BAKED STAGE!

No place on earth like the Merry Olde

**& VILLA &**

PLAYHOUSE THEATRE

254 South Main, Springville, Utah 84663 801/489-3088

Comedies, musicals, dramas every weekend!  
Performances by the Utah Lyric Opera Society  
Community Theatre and Acting Classes  
Children's Theatre and Youth Theatre Programs

### The Villa Institute of Performing Arts

A Non-profit Organization for the Growth of the Arts in Utah County

Call 489-3088 for more information

Visit Springville, Utah's "Art City"

## The Restaurant Roy



*The Finest Dining in Utah County*

*Complete Entrees Starting at \$12*

*Continental Menu*

*Unbeatable View*



2005 South State Street  
Orem, Utah 84097 235-9111

Lunch hours: 11:30 am - 2:00 pm Tuesday - Friday  
Dinner Hours: 5:00pm - 10:00 pm Tuesday - Saturday

Reservations Accepted

## "Why?"

That is probably the question I am asked most about this play. "Why this play about this topic?" "Why does it have this conclusion?" "Why a play about how we date at this Utah school?" After all, BYU is consistently ranked as the university with the nation's least interesting social scene.

The answer has something to do with a conversation I had with a close friend nearly two years ago. We were discussing a play I had written, *Just One of the Bunch*. I was venting about the way people had perceived some of the more autobiographical moments in it. Then, somewhere in the midst of my whining, she turned and said, "You know, Josh, you really ought to write a play about me."

Something about that struck me and, as a result, I wrote *Joyce Baking*.

Sort of.

Joyce is modeled principally, but not solely, on her. The plot is my own invention. On top of that, when she said to write about her, she was not even suggesting I consider her BYU years.

It is that story, however, that gets to the answer of the "Why?" question. In the moment my friend suggested that I write a play about her, I realized we don't often try to understand people like her. I created *Joyce* in an effort to do just that.

I wanted to achieve understanding of a common pain at BYU, one that we just don't talk about very often.

And if I don't achieve the understanding, well . . . the play is kind of funny.

I ought to thank some people quickly. Eric Samuelsen and Tim Slover have always supported my writing and encouraged me to keep going. The women of the then BYU Third Ward instructed me on how women really speak when there are no men around. I especially need to thank the people who let me use their stories and insights in this script: Martha, Craig, Jen, Tiffany, Shanna, Shannon. Also, I have to thank Josh Bradley. He rocks. He totally rocks.

I've dedicated this play to my mom. Without her encouraging me, I never would have written. Without her teaching me, I never could have. ●

## Why Joyce?

by Josh Brady, playwright



The first time I read Josh Brady's *Joyce Baking*, I knew that I wanted to direct it. I responded to the humor, to the dead-on depiction of BYU dating mores, to Josh's uncanny ear for the dialogue spoken by his peers. But more than that, I loved the choral quality of the piece, the way the play shows us the larger moral and spiritual implications of cultural practices.

I have been married now for seventeen years. Aside from all-too-rare evenings out with my wife, I don't even remember much about dating. What I mostly remember are like scenes from horror movies, funny in retrospect, but dreadful to live through. And when I talk to students about their dating experiences, I'm reminded of just how awful dating can be. The uncertainty of it all, the vulnerability, the ways in which devastating insecurities were exposed and sometimes exploited, the ways in which self-worth was challenged—very few dating situations seemed conducive to mental health or happiness. And yet, dating was also inescapable. You couldn't just opt out; not in our culture. (And it could also be fun sometimes too—I don't want to make it sound totally bleak, especially since some of you, reading this, are probably on dates right now!) Still, I'm amazed at how fortunate I was to marry who and how I did, when a long acquaintance ripened into friendship, and eventually, matured into love.

Especially at the beginning of a relationship, the emotional vulnerability of both parties suggests that we should treat each other with particular

kindness and delicacy. But the cultural practices and customs that we call "dating" don't often lend themselves to either kindness or compassion. Josh' play treats this subject with such gentle humor that it may be easy to forget the serious moral questions he explores.

My challenge as director has been to work with three wonderful actors to create characters that live and breathe. I hope that as you get to know Joyce, Becca, and Alex, that you will laugh at their follies and foibles, care for them, enjoy their company. If, tonight, you're on a date, I hope it's a good one. But I also hope that, when the play is over, at least some of you will go get ice cream or soda, and have a nice talk. The subjects of the play—dating, romance, Christian love, the whole guy/girl thing—are important ones, and worth deeper conversation than we often give them. ●

## Baking Joyce

by Eric Samuelsen, director

Colleen M. Baum (Joyce), from Salt Lake City, is working on an MA in theatre for young audiences. She has been seen in such BYU productions as *A String of Pearls*, *Gadianton*, and *Joyful Noise*. She loves acting but, unfortunately, can't get a date because of it. If you're interested in asking Colleen out, please leave your name and number with an usher. She dedicates her performance to Jay, her first crush.

Josh Brady (Playwright) is from Martinez, CA. Josh studies acting, directing, and playwriting. His acting credits include Elder Boyd in *Without Romance* and Cornelius Hackl in *The Matchmaker*. Josh wrote and directed last year's *Macho Man*. His favorite date included picnicking in the HFAC elevators and posing in the sculpture garden. He dedicates this show to his mother. He wants to thank Josh Bradley for showing him the way.

Jjana Valentiner Morrill (Becca), from Peoria, UT, is a theatre student with a performance emphasis. She is thrilled to be working with Colleen and Javen, as well as the directorial genius that is Eric. She fondly remembers freshman-year dates with her friend Duke, who frequently left floral arrangements on her door. Oh, and she likes Josh Brady tons. She loves Siff and Olly and her husband, Matt.

Dana Reyes (Production Stage Manager), from Evansville, IN, is a theatre arts major. Her most recent project was being assistant stage manager for *The Foreigner*. She has studied writing, stage managing, directing, makeup, and whatever else looked fun. Thanks Baby, Sporty, Ginger, Eaga, the Rug Rats, Matt, Sarah, Tori, Midnight Oil, the BYU 71st Ward, and especially the inflatable couch. Thanks, guys. Thanks a heap. (Dana doesn't believe in dating. She's bitter.)

Eric Samuelsen (Director) is from Bloomington, IN. He has directed *Rosencrantz and Guildenstern Are Dead*, *Dear Stone*, and *Erasmus Montanus*. He wrote *Gadianton*, *Accommodations*, and *The Seating of Senator Smoot*. His marriage is the culmination of a successful BYU dating experience.

Javen Ronald Tanner (Alex), from Kanab, UT, is a theatre arts major with an acting emphasis. His credits include *Henry IV*, *Little Women: Part First*, *Black Comedy*, and *The Private Ear*. At one point in high school, Javen was taking his girlfriend out at 6:00 am, because he was too busy in the evenings.



*Before the performance,  
join us for dinner.*



*Friday Night Grand Buffet*  
6:00 pm-8:00 pm

*Lunch: 11:30 am-2:00 pm*

Monday, Wednesday, Thursday, and Friday

*Devotional Luncheon Buffet: 11:45 am-2:00 pm*

Tuesday only

*Please call 378-9020 for reservations*

Located on the sixth floor of the Wilkinson Center





# We Dare You



## To Keep A Straight Face

Past history has shown that the above statement is impossible, but if you think you or your group feel up to the challenge,

**the Garrens**  
Comedy Troupe  
Garrens Hotline 379-8888  
www.garrens.com  
Come check out The Garrens every weekend at BYU!



# "An Artistic Approach to Lunch"



Monday through Friday  
11 am-2:30 pm

Located on the mezzanine of the Museum of Art  
No admittance fee to dine in the Museum Cafe



All the music you'll hear in *Joyce Baking* comes from local bands and, in most cases, from bands with a BYU connection. Since *Joyce Baking* is a play about our culture and community, we thought we should reflect the astonishing musical diversity of this area. I hope you enjoy the show as much as much as I've enjoyed researching the local music scene.

— Eric Samuelson, director

## CD Tracks Used in Joyce Baking

### Gathering Osiris

"Like Us," "Mary, I Am Stretched on Your Grave,"  
"To Save You from Me," "So Much Unsaid"

### Troy Sales

"I Miss You," "I Have this Feeling," "BYU Will Rock U"

### SunFall Festival

"Shot Down," "Start to Fall," "Was it Good," "Bones,"  
"So Happy," "Amy Outside"

### Sofa

"10,000 Miles Away"

### Milan Rogers

"Bittersweet," "Te Extrano," "Walking Shoes"

### Michael Grayson/Rene Gutierrez

"Santa Maria," "Fell in Love"

### Divine Comedy

"Cougarettes," "Floss"

### Ahrens Band

"Graduation," "Timpanogos," "Peanut Butter and Jelly"

### Kristie Bates and the Big Brother Combo

"Try Walking in My Shoes," "Alone Together," "Walk this Way," "Please Send Me Someone to Love"

### Emergency Exits

Emergency exits are located on either side of the theatre.  
Please identify the exit closest to your seat.

### Late Patrons

Late patrons will be seated only at the discretion of the house manager.

### Recording Prohibited

The use of film, video, or audio recording equipment in the theatre during a performance is expressly prohibited.

### Electronic Devices

Thank you for turning off pagers, cellular phones, and wristwatch alarms during the performance.

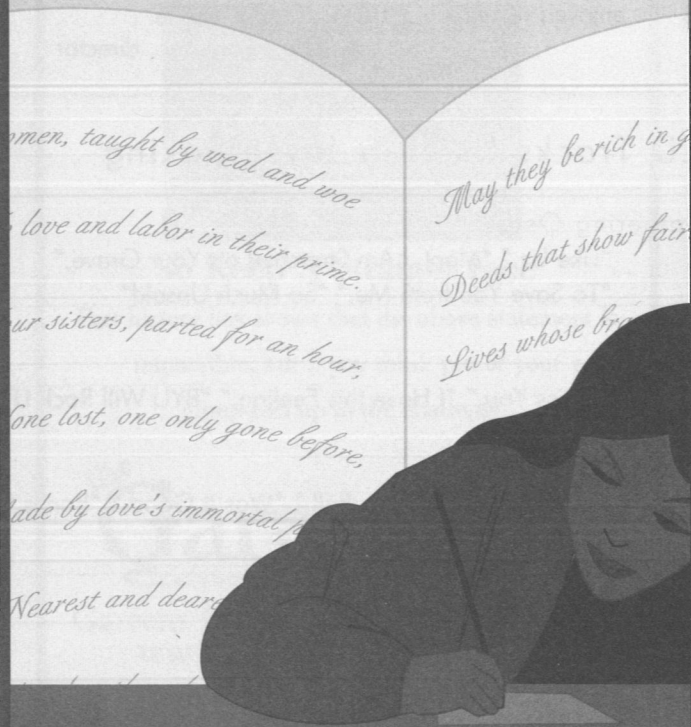
### Restrooms

Restrooms are located on the east side of the first, second, and third floors.



## *Little Women: Part Second*

By Alisha Watts Christiansen



A new stage adaptation of Louisa May Alcott's classic novel.

Director • Char Nelson

Meg, Jo, Beth, and Amy March are growing up,  
and discovering that love and sorrow  
take their lives in quite unexpected directions.

September 30–October 17, 1998

7:30 p.m.

Margetts Theatre • Harris Fine Arts Center

\$10 (\$2 off with BYU or student ID)

Fine Arts Ticket Office • 378-4322 • [www.byu.edu/cfac](http://www.byu.edu/cfac)



Don't miss:

## *Joyful Noise*

by Tim Slover

A composer, and a singer,  
poised between despair and triumph.

This is the story of the birth of Handel's Messiah,  
back by popular demand after last season's record run.

November 18–December 5, 1998

Pardoe Theatre • Harris Fine Arts Center

\$10 (\$2 off with BYU or student ID)

Fine Arts Ticket Office • 378-4322 • [www.byu.edu/cfac](http://www.byu.edu/cfac)

The Ahrens Band—Featuring the vocal talents of Ron Ahrens, Emily Rich and Dan Liljenquist, with instrumentalists J.J. Darrington and Celestia Feliz, the Ahrens Band is not afraid to deal with the deep questions found in Utah Valley Culture, like love, algebra, and sleep. Their first CD, *Smile* "slides effortlessly from exuberant to still to serious to deep" (Eric Snider, *The Daily Herald*). The CD is available in the BYU Bookstore. In their spare time, they like to knit.

Troy Sales—has been working as an audio engineer at BYU for the past seven years, and does studio production work for most of the performing groups on campus. His self-produced CD is unique, in that Troy wrote and sang all the songs, and played all the instruments himself. It's available at the BYU Bookstore.

Kristie Bates and the Big Brother Combo—With the spectrum of influences ranging from B.B. King to Bauhaus, this combo brings the music of the people to Provo. The Combo consists of guitarists Dave Madden, Ben Wariner and Brian Pierce, drummer Wil Crozier, and vocalist Kristie Bates. Their unique mixture of jazz, blues, Latin, and soul includes original music written by the band, and arrangements of songs by other artists, always with a new perspective and sound. For booking or a demo CD, contact them at [dmm3@email.byu.edu](mailto:dmm3@email.byu.edu).

Sunfall Festival—Sunfall Festival's warm sound is led by the rich and silky vocals of Amy Greetham. Guitarist Scott Wiley, drummer Chris Peterson and bassist George Brunt round out the band. Sunfall Festival plays live shows in Provo and Salt Lake frequently. Their CDs are available at Barnes and Noble, Media Play or Blockbuster Music. Their website is [www.sunfallfestival.com](http://www.sunfallfestival.com).

Sofa—Has a new album coming out next month. The band consists of Mike "Phlog" Ward, bass; Darin Hazen, lead vocals and trumpet; Jason Mayer, acoustic and electric guitar; Brett Thiess, drums and percussion; and Christopher Watson, sax and percussion. They can be reached at [sofaj@aol.com](mailto:sofaj@aol.com).

Gathering Osiris—Has played Provo and Salt Lake clubs for years. The group features the smooth vocal sounds of Brenda Andrus, along with instrumentalists Gerry Hart and Aaron Cole. Their CDs are available at Media Play and other local outlets. They can be contacted at 373-4480.

Milan Rogers—Milan Rogers wrote and performed most of the music for his CD, which is available at most local outlets. He is joined by fellow band members Todd Roper, drums and percussion; Risto Tolonen, bass keyboard; and Michael Dowdle, lead guitar. The band can be reached at 235-8616.

Divine Comedy—Is a local comedy troupe, whose CD is available at the BYU Bookstore and other local outlets. They can be contacted at [byu@email.byu.edu](mailto:byu@email.byu.edu).



## Production Staff

DIRECTOR .....	Eric Samuelsen
SCENIC DESIGNER.....	O. Lee Walker and Rory Scanlon
COSTUME DESIGNER .....	Melissa Parker
LIGHTING DESIGNER .....	Michael G. Handley
MAKEUP AND HAIR DESIGNER .....	Audrey Carter
SOUND DESIGNER.....	Ian D. Hunter
PRODUCTION STAGE MANAGER.....	Dana Reyes
SOUND ENGINEER .....	Kreg Peeler
SCENIC DESIGN ASSISTANT .....	Joielle Adams
TECHNICAL CREW .....	Melanie Kieffer
	Joshua Williams, Melissa Yacktmann
MAKEUP EXECUTION AND RUNNING CREWS.....	Laura Henry
	Theatre and Media Arts 267 and 367 Students
LIGHT BOARD OPERATOR.....	Larisa Hicken
DRESSER .....	Kristina Holley

## Producing Staff

DEAN, FINE ARTS AND COMMUNICATIONS.....Bruce L. Christensen

ARTISTIC DIRECTOR.....Bob Nelson

DIVISION OF ARTS PRODUCTION DIRECTOR.....Kenneth V. Crossley

PRODUCTION MANAGER.....Michael Magleby

STAGE MANAGEMENT ADVISER.....Loraine Edwards

FACILITY STAGE MANAGER.....Ben Myers

COSTUMER.....Cathie McClellan

ASSISTANT COSTUMER.....Carolyn Smith

CUTTER.....Tara De Grey

FIRST HAND.....Priscilla Allen

STITCHERS.....Janelle Jensen, Aaraina Ogzewalla

COSTUME CRAFTS.....Candida Nichols

WARDROBE SUPERVISOR.....Erika Steed

STOCK ASSISTANT.....Melissa Parker

HAIR AND MAKEUP ASSISTANTS.....Kendra Curtis  
Janine Hollingshaus

TECHNICAL DIRECTOR.....O. Lee Walker

ASSOCIATE TECHNICAL DIRECTOR.....Frank G. Weight

TECHNICAL ASSISTANT.....Matt Smith

EXPEDITOR.....Josh Brady

MASTER CARPENTER.....Frank G. Weight

ASSISTANTS TO MASTER CARPENTER.....Daniel Erikson  
Adam Smith

SCENIC STUDIO CREW.....David Andrus, Daniel Balls  
Cristian Bell, Eric Dixon, Dan Gifford  
Jim Harrison, Travis Kohler Ben Layton, Phillip Martin  
Jaelan Petrie, Logan Smith, Nathan Smith, Jamison Titera

SCENIC ARTIST.....Richard Clifford

ASSISTANTS TO SCENIC ARTIST.....Marcy Mockett, Ryan Griffiths

PROPERTIES ADVISER.....Loraine Edwards

PROP MASTERS.....Suzana Dodson

PROP ASSISTANT.....Katie Foster

MASTER ELECTRICIAN.....Roger Larsen

SCHEDULING MANAGER.....Britt Pearson

PRODUCTION ASSISTANT.....Adam Boulter

EVENT SECRETARY.....Beth Birchfield

BOX OFFICE MANAGER.....Paul Duerden

BOX OFFICE ACCOUNTANT.....TJ Strang

MARKETING MANAGER.....Paul Duerden

PUBLICITY.....Cindy Ferguson, Christy Hildebrandt  
Megan Pugmire, Becky Wadham

PUBLICITY PHOTOGRAPHER.....Mark Philbrick

PROGRAM.....Megan Pugmire

HOUSE MANAGER.....Neal Cox

PUBLICITY EDITOR.....Bob Nelson

BUSINESS MANAGER.....Russell Nielson

ACCOUNTANTS.....Brad Holman, Andrea Serrano  
Marko Zatyln

## Full-Time Faculty

## Adjunct Faculty/Staff

Bob Nelson	Carma de Jong Anderson
<i>Department Chair</i>	Lisa Bean
Rory Scanlon†	Michael Chadbourne
<i>Associate Chair</i>	Jerry Christopherson
Sharon Swenson	Peter Czerny
<i>Associate Chair</i>	James V. D'Arc
	Jim Dearden
Marion J. Bentley†	Loraine Edwards*
Ivan Crosland	Matt Hamilton
Dean Duncan	Michael Handley*
Stan Ferguson	Elizabeth Hansen
Eric Fielding	Shiela Heindel
April Chabries Haws	Rosemarie Howard
Larrie Gale	Paul Larsen
Barta Heinert†	John Lee
Darl Larsen	Michael Magleby
David Morgan	Cathie McClellan*†
George Nelson	Rick Moody
Harold Oaks†	Dave Nauta
Karl Pope	Dave Neyman
Eric Samuelsen	Kelly Peterson
Tim Slover	Bob Sink
Rodger Sorensen	Carolyn Smith*
Janet Swenson†	Jerry Stayner
Tim Threlfall	Anne Sward Hansen
Lee Walker*	Sterling VanWagenen
	Frank Weight*
Administrative Staff	Brian Wilcox
	D.C. Wright

## Administrative Staff

Ann Allred  
Deanna Dean  
Carolyn Hanson  
Tom Lefler  
Cornelia Wilson

\*Members of the  
College Division of Arts  
Production

†Members of Theta  
Alpha Phi

Comments on the performance?  
Visit our Web site and let us know what you think!  
[www.byu.edu/cfac/comments](http://www.byu.edu/cfac/comments)



THE PERFECT EVENING . . .



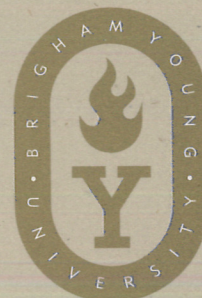
(IT'S IN THE DETAILS)



CAMPUS CRAFT & FLORAL  
OPEN M-F 9AM-6PM  
SAT 12PM-6PM  
VISA/MC/SIGNATURE CARD  
LST FLOOR ELWC



214EG0698

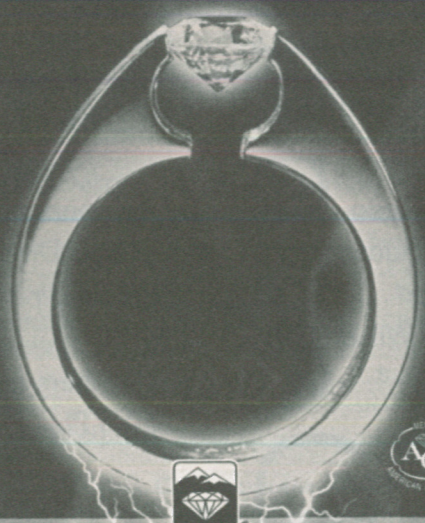


Lighting the Way

for the 21st Century

A CAPITAL CAMPAIGN

Pure Platinum



Sierra-West.  
JEWELERS

1344 S. 800 E., Orem, S.E. of Univ. Mall • 226-6006  
ZCMI Center, Downtown, Salt Lake City • 521-0900  
Valley Fair Mall, West Valley City • 966-9662

COLLEGE OF FINE ARTS & COMMUNICATIONS

Jim Murphy, Assistant Dean  
801-378-2565

e-mail: jim\_murphy@byu.edu