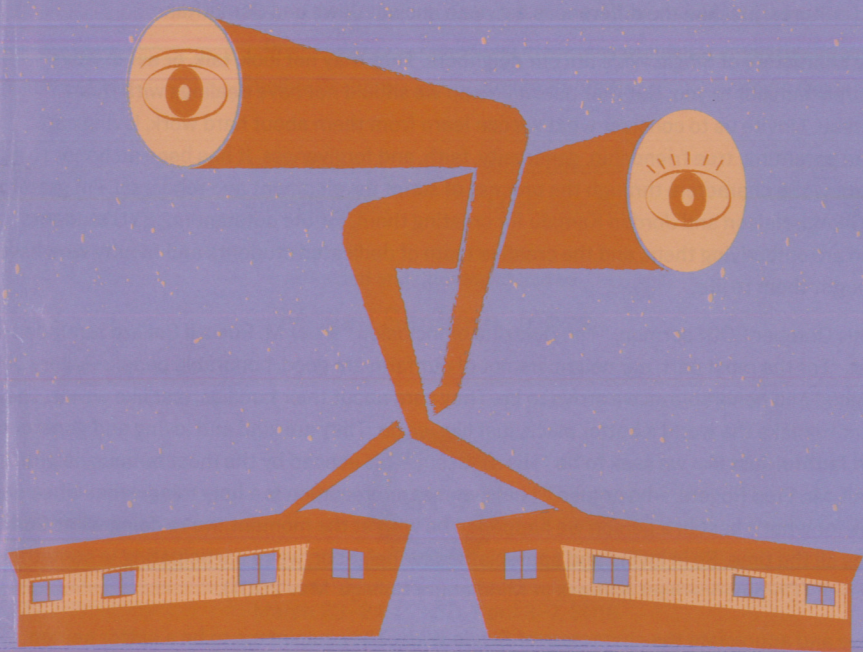


SINGLE

A NEW MUSICAL

WIDE



A NOTE FROM THE DIRECTOR

Won't You Be My Neighbor?

One of the most powerful encounters Jesus has in the New Testament is when a certain lawyer asks him what is necessary to inherit eternal life. Jesus turns the question back and asks the lawyer what the law states. The lawyer responds correctly: to gain eternal life you must first love the Lord with all your heart, soul, strength, and mind; second, you must love your neighbor as yourself. Then seeking to justify himself, the lawyer asks Jesus, "who is my neighbor?" (Luke 10:25-29).

Jesus responds to this question with arguably the most famous of all parables, the Parable of the Good Samaritan. This parable is frequently invoked to talk about the importance of charity. I think we sometimes forget that the story of the Samaritan who helps the wounded merchant is not about charity alone, but is a direct response to the question, "who is my neighbor?" Christ's message through the parable is that "my neighbor" is everyone, even those—or especially those—who are not like we are. Our neighbors have different lifestyles, different socio-economic positions, different races, religions, languages, family organizations, and cultures, just like the differences between ancient Jews and Samaritans.

The characters of *Single Wide* are our neighbors. They may not look, talk, or act in ways entirely familiar to you. But that doesn't mean we should not have dealings with them. Instead, I invite us to consider what we can learn from them about hard work, loving care, good parenting, true friendship, generosity, faith, and forgiveness. It has been an honor to get to know the characters through the process of script development and rehearsal. I'm grateful to George Nelson and Jordan Kamalu for creating them, for the outstanding BYU students who are embodying them, and the creative team of dedicated students and faculty who have brought them to life.

In his October 2001 sermon, "The Doctrine of Inclusion," Elder M. Russell Ballard reminded us that, "For the most part, our neighbors not of our faith are good, honorable people—every bit as good and honorable as we strive to be. They care about their families, just like we do. They want to make the world a better place, just like we do. They are kind and loving and generous and faithful, just like we seek to be." His assessment is echoed by the most famous neighbor of all, Mr. Fred Rogers, who argued, "I believe that appreciation is a holy thing—that when we look for what's best in a person we happen to be with at the moment, we're doing what God does all the time. So in loving and appreciating our neighbor, we're participating in something sacred" (Commencement address at Middlebury College, May 2001).

I love and appreciate the characters of *Single Wide*. They inspire me to be a better person. I hope you enjoy the next two hours that you will spend in their neighborhood. I pray that you will come away not only with great pleasure from this gift of a musical, but also with a renewed conviction to love your neighbor as yourself.

Megan Sanborn Jones

BYU COLLEGE OF FINE ARTS AND COMMUNICATIONS
DEPARTMENT OF THEATRE AND MEDIA ARTS

SINGLE WIDE

Book by George D. Nelson and Maclain Nelson
Music and Lyrics by Jordan Kamalu
Additional Lyrics by George D. Nelson
Orchestrations by Jordan Kamalu

Scenic Design Travis Coyne	Lighting Design Kalea Crapo	Costume Design Heather Everett	Makeup & Hair Design Arianna Krenk
Sound Design Karina Orton	Dramaturgy Shelley Graham	Production Stage Management Susan Kupferer	Property Design Kayla Doyle
	Vocal Direction Amanda Crabb	Music Direction Mark Johnson	

Directed and Choreographed by

Megan Sanborn Jones



March 23–24, 27–30, April 3–7, 2018
Pardoe Theatre, Franklin S. Harris Fine Arts Center

Please silence all mobile phones and electronic devices.
Photography, video and/or audio recording, and texting are forbidden during the performance.

STAFF FOR SINGLE WIDE

THEATRE STEERING COMMITTEE

Producer	Wade Hollingshaus
Artistic Director	Megan Sanborn Jones
Design and Technology Area Head	Michael S. Kraczek
Theatre Production Manager	Jennifer Reed

Assistant Director	Mandarin Wilcox, Michaella Robertson
Assistant Lighting Design	Daniel Barton
Assistant Scenic Design	Abbie Vance
Assistant Dramaturg	Amelia Merrell
Assistant Stage Management	Carmen Ma, Brandon Bringham
Design Faculty Mentor	Dennis Wright

Costume and Makeup Operations Manager	Jessica Cowden
Wardrobe Supervisor	Jaynanne Meads
Costume Faculty Mentor	Dennis Wright
Dressers	Ian Buckley, Thomas Kindall, Shannon Newbold, Richelle Sutton
Lighting Operations Manager	Michael Handley
Lighting Crew Coordinator	Marianne Ohran
Lighting Faculty Mentor	Michael Kraczek
Master Electrician	Celia Linford
Light Board Operator	Celia Linford
Technical Director	Travis Coyne
Scene Shop Manager	Ward Wright
Scenic Faculty Mentor	Rory Scanlon
Deck Crew	Natalie Herbst, Christopher Rollins
Property Shop Manager	Jennifer Reed
Sound Supervisor	Troy Streeter
Sound Engineer	Matthew Kupferer
Makeup Coordinator	Arianna Krenk
Makeup Faculty Mentor	Jennine Hollingshaus
Makeup Crew	Madison Colborn, Mikah Vaclaw
Dramaturgy Faculty Mentor	Shelley Graham
Stage Management Faculty Mentor	Jennifer Reed
Marketing Manager	Ken Crossley
Creative Services Manager	Nick Mendoza

CAST

Katy Alyssa Aramaki Hazen	Jaz Jasmyn Piepgrass	Guy Alex Diaz
Amanda Amanda Crabb	Flossie Meg Flinders	Bodie Tyler Fox
Serena Jessica Jensen	Sam Luke Belnap	

MUSICIANS

Guitar 1 Joseph Facer	Bass Mathieu Foley	Keyboards Mark Johnson
Guitar 2 Nate Waite	Drums Jordan Saltmarsh	



Katy (Alyssa Aramaki Hazen) Photo by Jaren Wilkey/BYU

MUSICAL NUMBERS

“Payday”	Katy, Amanda, Flossie, Serena, Jaz
“Overdue”	Katy, Amanda, Flossie, Serena, Jaz
“The World Revolves Around Me”	Flossie, Serena, Jaz
“Til It Feels Like Home”	Guy
“Pet Shop”	Amanda, Katy, Sam
“One For Me”	Katy, Sam
“One For Me” (Reprise)	Katy
“Safe With Me”	Serena, Jaz
“The World Revolves Around Me” (Reprise)	Flossie
“My Place”	Katy, Amanda, Flossie, Guy, Jaz, Serena

INTERMISSION (15 min)

“Just Takes One”	Amanda
“While You’re Young”	Guy, Sam, Serena, Jaz
“Microwave Life”	Katy
“Misunderstood”	Katy, Guy
“Just Takes One” (Reprise)	Katy, Amanda
“Love and War”	Flossie
“Microwave Life” (Reprise)	Katy
“One More Step”	Katy, Guy, Amanda, Flossie, Sam, Serena, Jaz, Bodie
“Payday” (reprise)	Katy, Guy, Amanda, Flossie, Sam, Serena, Jaz, Bodie

Jaz (Jasymn Swindall) and Serena (Jessica Jensen)
Photo by Jaren Wilkey/BYU



MEET THE CAST

Alyssa Aramaki Hazen
Katy

From West Linn, Oregon, Alyssa is a junior studying playwriting with a minor in editing. Recent credits include Mary Ann Pratt and Anna Fordham in the Nauvoo Pageant. She performed with BYU Noteworthy for three years and is a member of the a cappella group Lucca. Her original play, *London*, was produced as part of BYU's Microburst Theatre Festival in 2017. Alyssa and her husband, Garrett, met while serving as Young Performing Missionaries in Nauvoo, Illinois.

Luke Belnap
Sam

Luke Belnap is a twelve-year-old sixth grader with a love of theatre who moved last summer from sunny St. George, Utah, to the lovely Heber Valley. His past roles include title role in *A Charlie Brown Christmas* at St. George Musical Theater, Little Jake in *Annie Get Your Gun*, and Ryan in *High School Musical*, both at Brigham's Playhouse. In addition to making people laugh, Luke loves his film production program at school, *Harry Potter*, and road trips of any kind.

Amanda Crabb
**Amanda/
Vocal Director**

Amanda Crabb is pleased to be back at BYU after working as an adjunct professor in the music dance theatre program for ten years. Amanda is a graduate of the Boston Conservatory and has performed regionally at Music Theatre West, Tuacahn Amphitheatre, Sundance Summer Theatre, and many other regional houses. Some of her favorite shows include *Big Fish*, *Ragtime*, *Peter Pan*, and *West Side Story*. She is currently an assistant professor of musical theatre at Utah Valley University. Amanda is grateful for her family, including her five beautiful nieces.

Alex Diaz
Guy

From Sandy, Utah, Alex Diaz is a senior pursuing a BFA in acting. Recent credits include Harold Abrahams in *Chariots of Fire* at BYU, Hannibal in *The Curious Savage* at Highland City Arts Council, and Florizel in BYU's production of *The Winter's Tale*. He and his wife, Candice, recently had a baby girl.

Meg Flinders
Flossie

Meg is a senior in the music dance theatre program. Her most recent credits include Sarah in *Guys and Dolls* and Audrey in *Little Shop of Horrors* at Starlight Mountain Theatre, as well as Sybil Evers in *Chariots of Fire* and Cecily in *The Importance of Being Earnest* at BYU. She was a finalist and received the musical theatre scholarship at last year's Kennedy Center American College Theater Festival.

Tyler Fox
Bodie

From Safford, Arizona, Tyler is a sophomore studying acting at Utah Valley University. Recent credits include *Anything Goes* at Utah Valley University, *Fat Pig* and *Vanya and Sonia and Masha and Spike*, both at An Other Theater Co.

Jessica Jensen
Serena

From Logan, Utah, Jessica is a senior studying dance with a minor in ancient Near Eastern studies. Recent credits include Jane Manning in the Nauvoo Pageant and a member of The Dynamites in *Hairspray* at Pickleville Playhouse. Jessica is currently performing with BYU's Young Ambassadors.

Jasmyn Swindall
Jaz

From Arlington, Texas, Jasmyn Gina Swindall is a junior studying music dance theatre with a minor in psychology. Recent credits include Nina Rosario in *In the Heights* and Helena in *A Midsummer Night's Dream*, both at Mansfield Timberview High School. Jasmyn was married to her sweetheart, Travis Swindall, last November and is grateful to be making her BYU debut in *Single Wide*.

From L to R: Jaz (Jasymn Swindall), Katy (Alyssa Aramaki Hazen),
Serena (Jessica Jensen), and Flossie (Meg Flinders)
Photo by Jaren Wilkey/BYU



MEET THE PRODUCTION TEAM

Daniel Barton
Assistant Lighting Designer

From Syracuse, Utah, Daniel is a senior studying theatre education with a minor in Korean. Recent credits include assistant stage manager for *Chariots of Fire*, lighting designer for *Romeo y Julieta*, and master electrician for *Into the Woods*, *Argonautika*, and *The Importance of Being Earnest*, all at BYU. He has enjoyed being a part of this show, and while he dreams of never leaving academia, he is excited for the time when he will have no homework.

Kalea Crapo
Lighting Designer

From Fort Collins, Colorado, Kalea is a senior studying lighting design. Recent credits include lighting design for *The Crucible* at BYU, which she also presented at the Kennedy Center American Center Theater Festival. She is excited to be part of this project in her last semester at BYU. She would like to thank her supportive husband, family, and professors, as well as her assistant, Daniel Barton. She could not have done this without them.

Kayla Doyle
Props Designer

From Colorado Springs, Colorado, Kayla Doyle is a senior in theatre arts studies, focusing on scenic design. Recent works include set designer for *The Mill on the Floss* and *Macbeth*, as well as production designer for BYU Vocal Point's "Beauty and the Beast Medley" music video.

Heather Everett
Costume Designer

From Syracuse, Utah, Heather is a junior studying theatre arts studies with an emphasis in costume design and hair and makeup design. Recent credits include assistant for costumes on *Mary Poppins* and *Chariots of Fire*, and makeup on *Into the Woods* at BYU. She also worked with BYU's film department as a wardrobe supervisor for *I Love My Robot Boyfriend!*. Her upcoming projects include wardrobe supervisor for *Sleep Don't Slumber* and makeup designer for *The Mousetrap* at BYU.

Shelley Graham
Dramaturg

Shelley Graham has a BA in theatre education and an MA in theatre history and criticism from Brigham Young University. She has worked as a dramaturg and education director for a number of institutions, including Pioneer Theatre Company, American West Heritage Center, and Utah Lyric Opera. She is currently dramaturgy supervisor in BYU Department of Theatre and Media Arts and is the resident dramaturg at the Covey Center for the Arts in Provo.

Mark Johnson
Music Director

From Tempe, Arizona. Recent music directing credits include *Footloose* and *The Ballad of Cat Ballou* at Jackson Hole Playhouse and *White Christmas* at BYU. He graduated with a BM from BYU and attended the Eastman School of Music for graduate study.

Megan Sanborn Jones
**Director/
Choreographer**

Megan Sanborn Jones is a professor in the Department of Theatre and Media Arts, where she serves as the associate chair of the department and artistic director of BYU Theatre. She has published work in *Theatre Journal*, *Theatre Topics*, *Theatre History Studies*, and more. Her second book, *Contemporary Mormon Pageantry: Seeking After Our Dead*, is forthcoming from the University of Michigan Press in October 2018. Megan is also a director/choreographer with credits at BYU including *Arabian Nights*, *Princess Academy*, Young Company's *Twelfth Night*, and most recently, *Travesties*. Megan and her husband, Dr. Glen Jones, are the happy parents of Cohen (11) and Eden (8).

Jordan Kamalu
**Music, Lyrics, and
Orchestrations**

Jordan Kamalu is a young musical theatre and film score composer and a jazz pianist. In 2015 his first show, *Single Wide*, won Best Collegiate Musical from the Kennedy Center in Washington, D.C. Later, his music for the animated film *Papa* won a Student Emmy at the 2016 College Television Awards. He studied songwriting at the prestigious Berklee College of Music, after which he completed a degree in commercial music studies from BYU.

Arianna Krenk
**Hair and Makeup
Designer**

From Marcellus, Michigan, Arianna is a senior studying theatre arts with an emphasis in hair and makeup design. Recently, she was hair and makeup designer for BYU's *The Glorious Story Emporium*. She previously worked on student-directed shows at BYU such as *The Miracle Worker*, *Twelve Angry Men*, and *Children of Eden*. This is Arianna's senior project. She has loved working on it over the last year and hopes you enjoy the show.

Susan Kupferer
**Production Stage
Manager**

Born and raised in Irvine, California, Susan Kupferer is a junior studying stage management at BYU. Her recent credits include production stage manager of BYU's *Christmas Around the World*, *The Barber of Seville*, and *The Importance of Being Earnest*, as well as Utah Vocal Arts Academy's *Don Giovanni* during its Summer Opera Festival. Susan is currently the touring stage manager with BYU's Ballroom Dance Company and the production stage manager of next season's *Wonderland*.

Carmen Ma
**Assistant Stage
Manager**

From Hong Kong, Carmen is a senior studying theatre arts studies with an emphasis in stage management. Recent credits include assistant stage manager for BYU's *The Mill on the Floss*.



ANNE OF GREEN GABLES

PARDOE THEATRE
JUNE 1-16

BYUarts
BYUARTS.COM

MEET THE PRODUCTION TEAM, CON'T.

Amelia Merrell
Assistant Dramaturg

Amelia is a senior in the theatre arts major and will be graduating from BYU this spring, along with her husband. She has recently discovered a love for dramaturgy and still has so much to learn before she graduates. She has loved working with Shelley Graham on this amazing production.

George D. Nelson
Playwright

George D. Nelson heads the theatrical writing program at BYU. He is an award-winning director, writer, and playwright. *Single Wide* had its professional premiere off-Broadway in the New York Musical Theatre Festival in 2015. It was named one of the top 10 new Broadway plays for 2015 and won the Blanche and Irving Laurie Musical Theatre Award. Recent directing credits at BYU include director *Microbrust Theatre*, an evening of student-written plays; *Beauty and the Beast*, and *Mary Poppins*.

Karina Orton
Sound Designer

From New York City, Karina Orton is a junior studying theatre arts studies with an emphasis in sound design and a minor in Scandinavian studies. Her experience with sound began in summer 2016 during her time as an intern at The Cape Playhouse for its historic 90th season. She is excited to be a full designer on *Single Wide*. Karina also enjoys songwriting, and her original music can be found on any music platform.

Michaela Robertson
Assistant Director

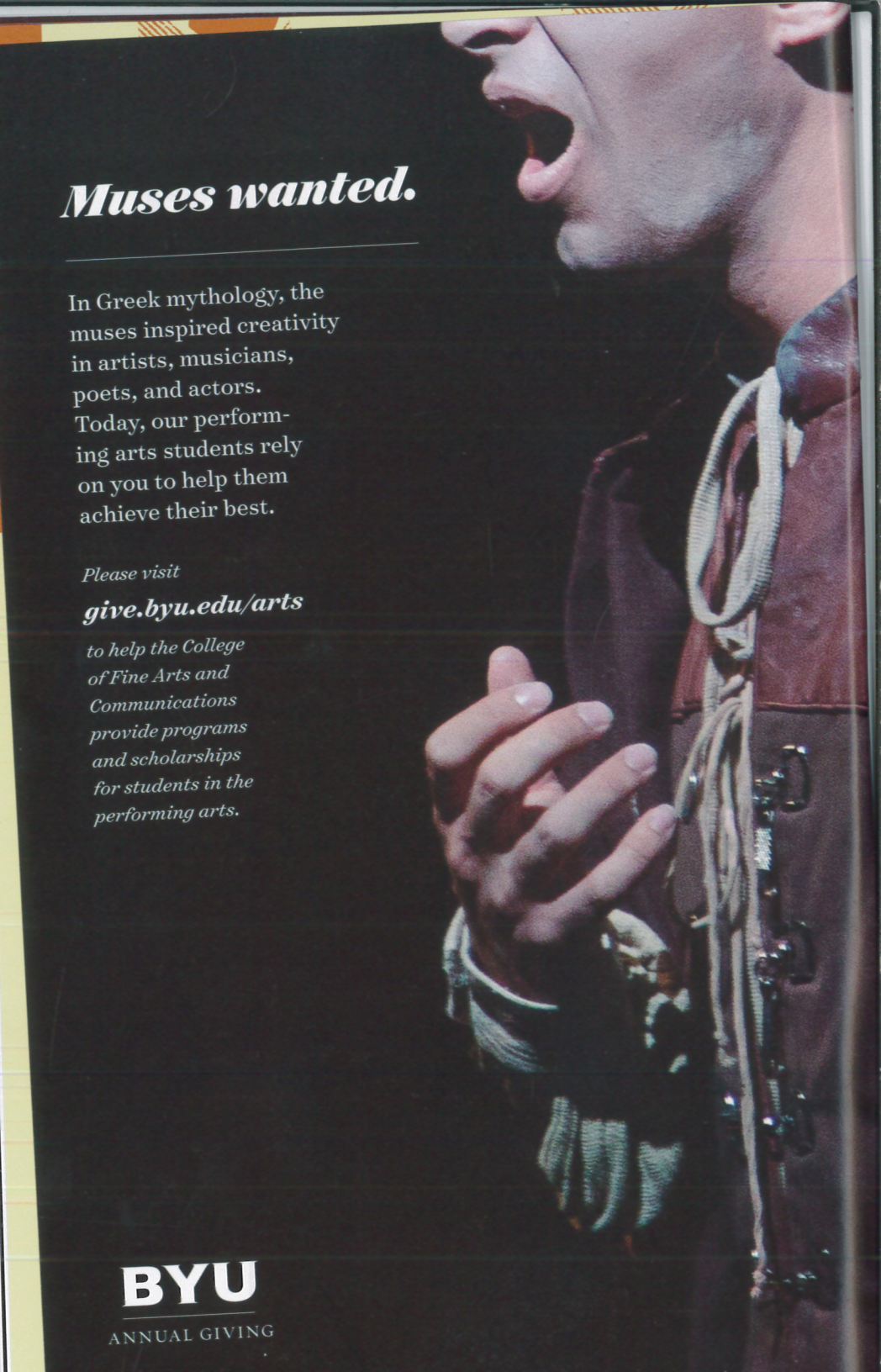
From Hanford, California, Michaela is a senior studying theatre education. She is excited to start student teaching and is grateful for her opportunity to learn as much as she can.

Abbie Vance
**Assistant Set
Designer/Set
Decorator**

From Stevensville, Montana, Abbie Vance is a senior majoring in media arts with an emphasis in production design. Recent production designs include Siegfried and Jensen's "Action Figure" commercials, *Arthur Weatherby*—an LDS Film Festival selection—and Vocal Point's "The Greatest Showman Medley" music video. This is her second time assisting for a theatre production, and she looks forward to more set design opportunities in the future. She and her husband, Jonny, live in Santaquin, Utah, and are very much in love.

Mandarin Wilcox
Assistant Director

From Soldotna, Alaska, Mandarin is a junior in theatre arts education. She loves the inspiring and evocative nature of theatre and appreciates the powerful art that BYU presents. She's thrilled to have been involved in the production of this wonderful musical and is grateful for the people she got to know along the way.



Muses wanted.

In Greek mythology, the muses inspired creativity in artists, musicians, poets, and actors. Today, our performing arts students rely on you to help them achieve their best.

Please visit

give.byu.edu/arts

to help the College of Fine Arts and Communications provide programs and scholarships for students in the performing arts.

BYU

ANNUAL GIVING