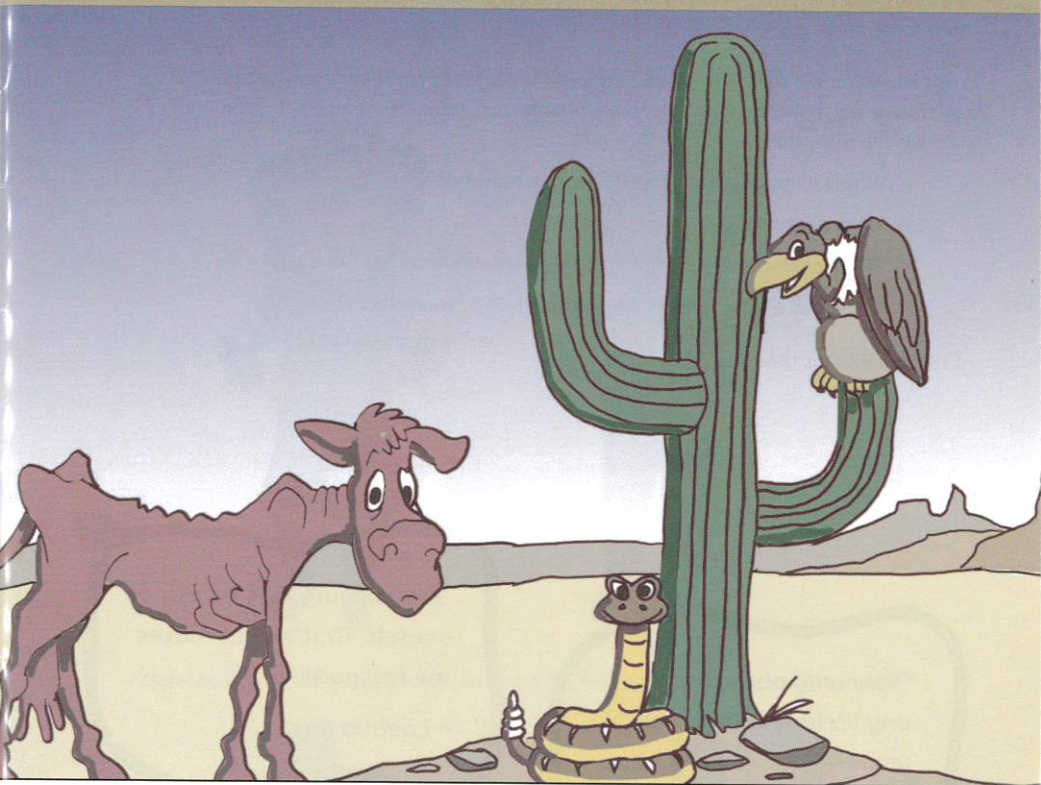


# TWELFTH NIGHT



## STUDY GUIDE

Christian Riboldi, Dramaturg

- 8** Dramaturg's Note: This Above All
- 9** To Thine Own Self Be True
- 10** Shakespeare Word for Word
- 11** Getting To Know The Bard
- 12** Why The Wild West?
- 13** Draw Your Own Mustache
- 14** Autographs

## DRAMATURG'S NOTE: THIS ABOVE ALL

Growing up can be hard. There are many groups of people with so many different interests and talents. Sometimes it's hard to figure out where you fit in with everyone else because no one is quite the same. And you know what? That's okay. We are happiest when we chose to be ourselves.

In this show you will see many characters wearing disguises or dressing silly because they think it will make them more popular or attractive. Here are some great questions to consider before, during, and after the play:

- Why is it important for us to be true to ourselves?
- What does being true to yourself mean?
- Which characters struggle to do that? Have you ever felt like them?
- When was a time you felt happy being true to yourself?

—Christian Riboldi, dramaturg

*"Your only obligation in any lifetime is to be true to yourself."*

—Richard Bach

*"Real beauty is to be true to oneself. That's what makes me feel good."*

—Laetitia Casta

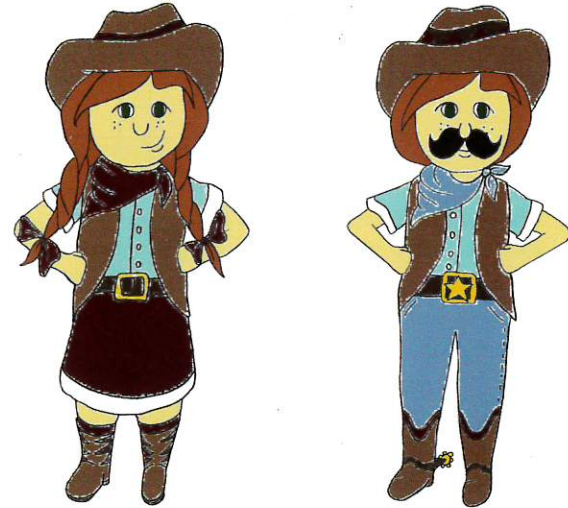
*"Surely He can make of you the genuine, spiritual being of light and truth you desire to be."*

—President Utchdorf

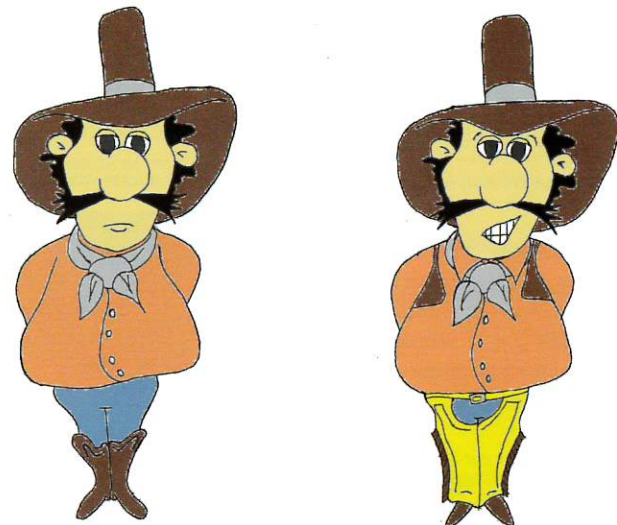
## TO THINE OWN SELF BE TRUE

In *Twelfth Night* there are a few characters who pretend to be someone they're not. Let's practice spotting some of the disguises you will see in the play (Answers on page 14).

Viola has 10 different things she uses to disguise herself. Can you find them all?



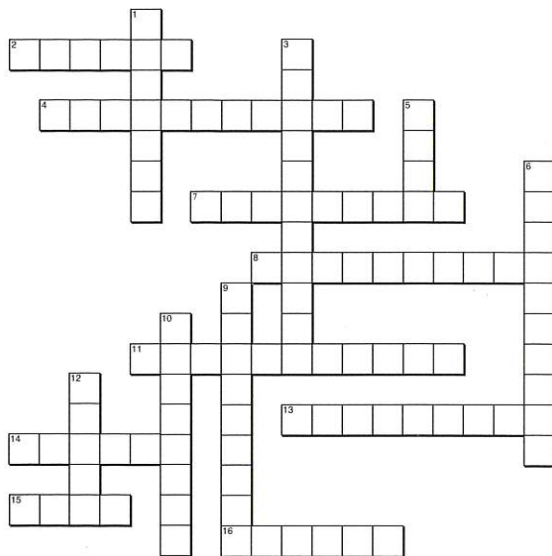
Malvolio changes 5 things in order to impress Olivia. Can you spot the differences?



## SHAKESPEARE WORD FOR WORD

Playwright William Shakespeare was a man of many words. Not only are many used to describe him, but he also invented thousands of words that we still use today! Complete the crossword puzzle below to see just a few. First, check out our list of some fun words Shakespeare created when writing *Twelfth Night*. Try and match them to their definition. Then, take a look at the biography on the next page to find the missing words in the phrases marked with an \*. Good luck!

- Control
- Dexterously
- Fashionable
- Hobnob
- Lustrous
- Malignancy
- Negotiate
- Whirligig



### ACROSS

2. To mix socially, especially with those of higher social status
4. Skillful and competent with the hands
7. Try to reach an agreement or compromise by discussion with others
8. The quality of being cruel or unkind
11. \*As a \_\_\_\_\_, Shakespeare bought expensive property throughout Stratford
13. \* Shakespeare was a talented \_\_\_\_\_, inventing over 1700 words that we use today
14. \*Shakespeare enjoyed his role as \_\_\_\_\_, with 8 children (including one set of twins!)
15. \*Often called The Great \_\_\_\_\_
16. \*Many believe Shakespeare was a \_\_\_\_\_ since he used 28,829 unique word forms in his works

### DOWN

1. The power to influence other's behavior or the course of events
3. Representing a current popular trend or style
5. \*Shakespeare was also a \_\_\_\_\_, writing 154 sonnets
6. \*But of course, Shakespeare is mostly known as a \_\_\_\_\_, writing 37 plays.
9. A thing regarded as hectic or constantly changing
10. Having shine or glossiness
12. \*Shakespeare started his career as an \_\_\_\_\_.

\* Use the biography on the next page to find and learn about these words. (Answers on page 14).

## GETTING TO KNOW THE BARD

Think about your best friends. How well do you know them? Do you remember their birthdays? The more you know about each other, the closer friends you'll become. The same is true when we learn. Getting to know history can be as fun as making new friends. Here are a few fun facts about William Shakespeare's life so that you can get to know him better.

- William Shakespeare was born in a town called Stratford-upon-Avon on or near April 23, 1564. He was the third child of eight in his family. His parents most likely couldn't read or write.
- Shakespeare got married at age 18 to Anne Hathaway. They had 8 children with one set of twins.
- It's believed that Shakespeare started his career as an actor, and he acted in many of his own shows.
- In the time of Shakespeare a bard was a poet who shared his poems by reciting them to others. One of Shakespeare's common titles is The Great Bard because he has been seen by many as the most influential writer and storyteller in the English language.
- Shakespeare was a literary genius. In his time some of the laborers could have had a vocabulary of 300 words or less. Shakespeare used 28,829 unique word forms in his works.
- A wordsmith is an inventor of words. Shakespeare invented over 1700 words that we now use in our everyday language.
- As a poet and playwright Shakespeare wrote 154 sonnets and 37 plays. Most of Shakespeare's writing is poetic.
- Shakespeare wrote most of his plays in a poetic style called iambic pentameter. Iambic pentameter is a style of writing where every line has exactly 10 syllables and every other syllable is a little stronger than the one before it. For example, the opening line of *Twelfth Night* is: "If music be the food of love, play on;"
- Shakespeare's sonnets usually rhyme and are all exactly 14 lines long.
- A successful businessman, Shakespeare bought expensive property throughout Stratford, and was a co-owner of the Globe Theater.



"People are watching the way we act, more than they are listening to what we say."  
—Max Lucado

## WHY THE WILD WEST?

Wait a minute! If Shakespeare lived 400 years ago in England, then why are we performing this show in the Wild West? If any of you are wondering why we're dressing up as cowboys and cowgirls, then you're probably not alone. Here are some questions the dramaturg had and answers he found when learning about Shakespeare. Hopefully they help you understand and enjoy this production!

### Q: How did actors dress in the time of Shakespeare?

A: Shakespeare was originally done in a time period called the Elizabethan Era. In Shakespeare's plays the actors would wear costumes that matched their every day clothes. That would be like you wearing jeans and a t-shirt as a costume in a play.

### Q: Why do people put Shakespeare plays in different time periods?

A: It's popular to put Shakespeare plays in other time periods in order to make the story different than the original, to better relate to the audience, and sometimes to find different meaning in the story.

### Q: What are some different ways to perform Shakespearean plays?

A: Today there are many ways to do Shakespeare plays. You can dress like they used to in Shakespeare's time, with big dresses, feathery hats, and capes. However, sometimes people put Shakespeare in different time periods like the future, space, modern times, or in our case the Wild West.

### Q: Why are we performing Shakespeare in the Wild West?

A: The short answer is, why not! It's fun seeing cowboys and girls speaking in fun accents and telling a funny story. The long answer would be for each one of us to look at the west and see what we can learn from their story of adventure, honesty, and grit. Ask yourself, in what ways were cowboys and early western settlers true to themselves?

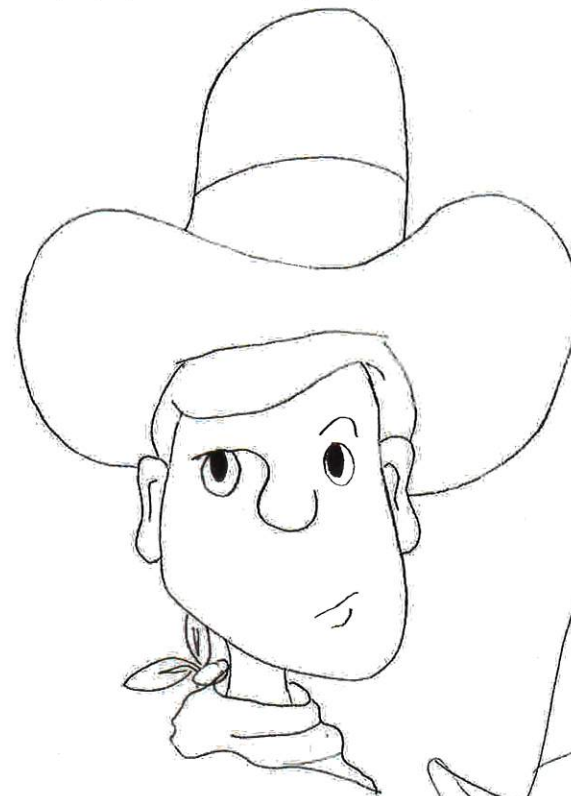


*"This above all:  
to thine own self  
be true. And it  
must follow, as  
the night the day,  
Thou canst not  
then be false to  
any man."  
—William  
Shakespeare*

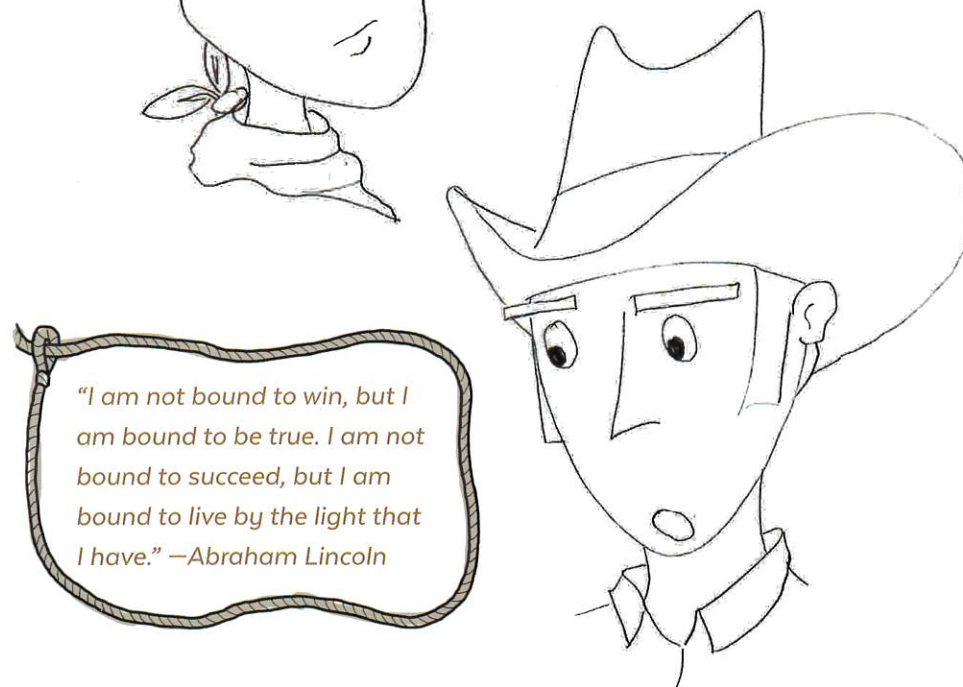


## DRAW YOUR OWN MUSTACHE!

Director Megan Sanborn Jones uses a lot of fake mustaches to tell this version of *Twelfth Night*. Use the blank faces below to draw your favorite style of mustache. And don't forget to visit our lobby display in order to make your very own fake mustache to take home!



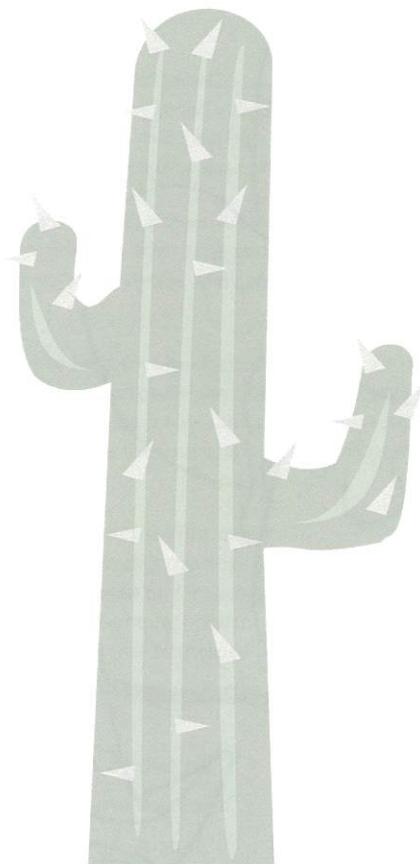
*"The hardest  
thing to do  
is to be true  
to yourself,  
especially when  
everybody is  
watching."  
—Dave  
Chappelle*



*"I am not bound to win, but I  
am bound to be true. I am not  
bound to succeed, but I am  
bound to live by the light that  
I have." —Abraham Lincoln*

## AUTOGRAPHS

After the play there will be a chance to meet and talk with some of the actors. Feel free to talk with them about what it's like being in a play. After you talk with them try and get as many of their autographs as you can.



Answer Key for crossword puzzle:  
Across: 2. Hobnob, 4. Dexterosly, 7. Negotiate, 8. Malignancy, 11. Businessman, 13. Wordsmith, 14. Father, 15. Bard, 16. Genius  
Down: 1. Control, 3. Fashionable, 5. Poet, 6. Playwrite, 9. Whirling, 10. Lustrous, 12. Actor  
Answer key for page 9:  
Viola Differences:  
Hat, Hair, Mustache, Smile, Bandanna, Buttons, Belt, Pants, Boots, Spurs.  
Malvolio Differences: Eyebrows, Smile, Collar, Vest, Yellow Chaps.

### TO LEARN MORE

Interested in learning more about this production of *Twelfth Night*? Check out The 4th Wall, BYU's dramaturgy blog: [4thwalldramaturgy.byu.edu/category/twelfth-night](http://4thwalldramaturgy.byu.edu/category/twelfth-night)



## PRODUCTION STAFF CONTINUED

Julia Ashworth  
Young Company  
Artistic Director

Julia Ashworth is an assistant teaching professor of theatre education in the Department of Theatre and Media Arts at Brigham Young University. She has worked in the field of arts education – as an artist, administrator and K-12 teacher – for over fifteen years. Her duties in the Theatre and Media Arts department at BYU include serving as artistic director for The Young Company and acting as program director for the Theatre Education program. Her work focuses primarily on theatre for young audiences and applied theatre practices.

Alyssa Bybee  
Costume Designer

From Henderson, Nevada. Senior in Theatre Arts Studies with an emphasis in costume design with minors in political science and visual arts. Recent credits include co-costume designer for *Alice in Wonderland* (ballet).

Franny Gleave  
Assistant  
Stage Manager

From Salt Lake City, Utah. She is a senior in theatre arts studies with a minor in art history. This is her first experience with the Young Company at BYU, and it has only deepened her appreciation for Shakespeare, theatre, and the arts.

Megan Sanborn Jones  
Director

Dr. Megan Sanborn Jones is scholar and a director/choreographer. Her work has been published in Theatre Journal, Theatre Topics, Theatre History Studies, and more. Her second book, *Walking with the Dead: Resurrecting the Past in Mormon Pageant Performance* is forthcoming this year. Her BYU credits including: *Midsummer Night's Dream*, *Arabian Nights*, *Henry 5*, as well as last year's world premiere adaptation of Shannon Hale's *Princess Academy*. She and her husband, Dr. Glen Jones, are the happy parents of Cohen and Eden.

Dayne Joyner  
Production  
Stage Manager

From Athens, GA. Junior studying theatre arts, emphasis in stage management and directing. He recently returned from serving as a Young Performing Missionary this summer in Nauvoo, Illinois where he performed in Nauvoo's musical productions and presentations. Previous credits include stage manager for *The Clean House* (mask club), Flight Operator for *The Count of Monte Cristo* (BYU), and Assistant Stage Manager for Disney's *Beauty and the Beast* (BYU).

Christian Riboldi  
Dramaturg

From Lehi Utah. Junior in computer science with a minor in theater arts studies. His favorite roles include the Prince in Cinderella with the Pioneer Alumni Repertory Company, the title role from *The Scarlet Pimpernel* at Lehi High School, and the Beast from *Beauty and the Beast* also at Lehi. This is his first time being a dramaturg for a BYU production. He and his wife have been married for a year and a half.

Karlee Savage  
Assistant  
Stage Manager

From Yuma, AZ. Sophomore in theatre arts education with a minor in TESOL. Recent credits include makeup artist for Li'l Abner at Timpanogos High School and *I Am Jane* at BYU, as well as sound technician for *And Then There Were None* at Gila Ridge High School.

## PRODUCTION STAFF (CONT.)

Rory Scanlon  
Scenic Designer

From American Fork, UT. Completed theatre design degrees at Idaho State University, BYU, and the University of Illinois at Urbana-Champaign. In 1984 he returned to BYU as a professor in the Department of Theatre and Media Arts. His professional credits include a range of television, film and theatre projects from Disney to the Hill Cumorah Pageant. His book *Costume Design Graphics* with Costume Fashion Press in New York was released in 2001. He and his wife, Deanna, have five children and eleven grandchildren.

Sarah Beth Stewart  
Makeup Designer

From Evergreen, Colorado. Senior in theater arts with emphases in costume design and technology and makeup design and technology with minors in visual arts and nutrition. She designed the costumes for BYU's *Water Sings Blue* and *Microburst Theater Festival 2015*. She has worked as the assistant costume designer on BYU's *Princess Academy*, *Our Town*, and *A Man for all Seasons*. She currently tours with the Young Ambassadors as their student costumer.

Rebeca Wallin  
Young Company  
Managing Director

From Provo, UT. Rebeca enjoys her work as Managing Director of Young Company and has fun with her husband Joel running a "Shakespeare for Kids" program during the summer at the Orem Library. She has three children who are growing up on Young Company theatre.

BYU DEPARTMENT OF THEATRE AND MEDIA ARTS

## THE TASTE OF SUNRISE

BY Susan L. Zeder

DIRECTED BY Julia Ashworth



Mar. 10–12, 16–19, 22–25  
7:30 pm

Mar. 19, 26  
2:00 pm

Margetts Theatre  
HFAC

Post-Performance Discussions  
Mar. 17, 24  
Performed in American Sign  
Language and spoken English

**BYUart** 801-422-2981 byuarts.com

Produced by special arrangement with THE DRAMATIC PUBLISHING COMPANY of Woodstock, Illinois.

## COLLEGE FINE ARTS AND COMMUNICATIONS

### DEAN

Ed Adams

### ASSOCIATE DEAN

Amy Petersen Jensen

### ASSOCIATE DEAN

Jeremy Grimshaw

### ASSOCIATE DEAN

Rory Scanlon

## DEPARTMENT OF THEATRE AND MEDIA ARTS

### FULL TIME FACULTY

Wade Hollingshaus, chair  
Tom Lefler, asso. chair  
Julia Ashworth  
Brad Barber  
Stephanie Breinholt  
Scott Christopherson  
Dean Duncan  
Mary Farahnakian  
Barta Lee Heiner  
Amy Petersen Jensen  
Megan Sanborn Jones  
Michael Kraczek  
Darl Larsen  
Lindsay Livingston  
Kelly Loosli  
David Morgan  
George Nelson  
Jeff Parkin  
Tom Russell  
Rory Scanlon  
Sharon L. Swenson  
Rodger Sorensen  
Benjamin Thevenin  
Tim Threlfall

### ADJUNCT FACULTY & PART TIME FACULTY

Travis Allen  
Dane Allred  
Brandon Arnold  
Lisa Bean  
Matthew R. Carlin  
Michael Chadbourne  
Caitlin Cotten  
Travis Coyne\*  
Deanne DeWitt\*  
Lisa Elzey  
Matt Goebel  
Shelley Graham  
Michael G. Handley\*  
Marianne Hales Harding  
Katie Hill  
Jennine Hollingshaus  
Ben Hopkin  
Wynn Hougaard  
Kris Jennings  
Ruston Jones  
Carrie Lopez

Teresa Love  
Jeffrey Martin\*  
Jaynanne Meads  
Matt Meese  
Kee Miller  
Mikel Minor  
Bradley Moss  
Shawnda Moss  
Kyle Nielson\*  
Marianne O'Hran\*  
Doug Olsen  
Donnette Perkins\*  
Karen Peterson  
Stephen Purdy  
Reese Purser  
Emily Ray  
Jennifer Reed\*  
Nathaniel Reed  
Lauren Roundy  
Courtney Russell  
Janine Soback  
Jerry Stayner  
Bruce Sundstrom

Anne Sward-Hansen  
Ben Unguren  
Mary Jane Wadley\*  
Becky Wallin  
Ron Wilkinson  
Rosie Ward  
Ward Wright\*

### ADMINISTRATIVE STAFF

Elizabeth Funk  
Kyle Stapley

\*BYU Arts Production



### College Theater Festival™ 48

part of the Rubenstein Arts Access Program,  
is generously funded by  
David and Alice Rubenstein



Additional support is provided by The Honorable Stuart Bernstein and Wilma E. Bernstein; the Blanche and Irving Laurie Foundation; the Dr. Gerald and Paula McNichols Foundation; The Harold and Mimi Steinberg Charitable Trust; Hilton Worldwide; and Beatrice and Anthony Walters and the AnBryce Foundation.

Education and related artistic programs are made possible through the generosity of the National Committee for the Performing Arts and the President's Advisory Committee on the Arts.

This production is entered in the Kennedy Center American College Theater Festival (KCACTF). The aims of this national theater education program are to identify and promote quality in college-level theater production. To this end, each production entered is eligible for a response by a regional KCACTF representative, and selected students and faculty are invited to participate in KCACTF programs involving scholarships, internships, grants and awards for actors, directors, dramaturgs, playwrights, designers, stage managers and critics at both the regional and national levels.

Productions entered on the Participating level are eligible for invitation to the KCACTF regional festival and may also be considered for national awards recognizing outstanding achievement in production, design, direction and performance.

Last year more than 1,300 productions were entered in the KCACTF involving more than 200,000 students nationwide. By entering this production, our theater department is sharing in the KCACTF goals to recognize, reward, and celebrate the exemplary work produced in college and university theaters across the nation.

## BYU ARTS PRODUCTION

### DIRECTOR

Russell Richins

### SCHEDULING/ PRODUCTION SUPERVISOR

Corinne Mayberry

### SCHEDULING/ PRODUCTION SECRETARIES

Desiree De Assis  
Gi Le  
Madison Lucero  
Chelsea Paxton

### ASSO. DIRECTOR/ PRODUCTION MGR. FOR DANCE

Benjamin Sanders

### PRODUCTION CONTENT DESIGNER

Erin Dinnell Bjorn

### PRODUCTION ASST.

Erin Gale

### PRODUCTION MGR. FOR THEATRE & MEDIA ARTS

Jennifer Reed

### PRODUCTION ASST.

Heather Richardson

### PROPERTIES SHOP MGR.

Scott Jackson

### PROPERTIES CREW

Abrianna Hockett  
Taylor Robinson  
Nathan Tanner Stout

### PRODUCTION MGR. FOR MUSIC/BRAVO!

Bridget Rosella Benton

### TECHNICAL OPS. MGR./ TECHNICAL DIRECTOR

Travis Coyne

### TECHNICAL DIRECTOR/ PROJECTIONS SUPERVISOR

Mark O'Hran

### TECHNICAL ASST.

Jake Fullmer

### PROJECTION ASST.

Bradley Hager

### ASST. TECHNICAL DIRECTOR

Ward Wright

### DRAFTSMAN/ EXPEDITOR

Henrique Bronovski

### SCENE SHOP CREW

Christian Rupp  
Tucker Roberts  
Brett Johnson  
Osvaldo Pacheco  
Nat Maxwell  
Jonathan Kimble  
Kyle Cook  
Kayla Doyle  
Devon Howard

### SCENIC ARTISTS

Haylie Shaw  
Desiree Short  
Dillon Taylor  
Mary Ann Richardson

### LIGHTING OPS. MGR.

Michael G. Handley

### LIGHTING ASST. MGR.

Marianne O'Hran

### ELECTRICIANS

Josh Fawcett  
Juliette Mergist  
Caitlin Hall  
Mark Peterson  
Matthew Wyman  
Scott Savage  
Aleks Christensen  
Tammi Frogget  
Kalea Burke  
Celia Linford  
Macy Hanson  
Nathan Barton

### STAGE OPS. MGR.

Bridget Rosella Benton

### PRODUCTION ASSTS.

Rebecca Rose  
Courtney Schmutz

### STAGE MGRS.

Caitlin Black  
Luke Campbell  
Mitch Cross  
Joe Huston  
Christina Iverson

### HOUSE MGRS.

Chuck Dearden  
Anita English  
Ellen Huish  
Jessica Chen

### STAGE OPS./USHERS

Rachel Aedo  
Abram Allred  
Braden Armstrong  
Spencer Black  
Rebekah Boaz  
Max Dearden  
Shelby Hornback  
Annie Jardine  
Dayne Joyner  
Jonathan Meyers  
Britney Miles  
Logan Ruesch  
Andrew Smith  
Auston Youngblood

### COSTUME OPS. MGR.

Donnette Perkins

### COSTUME OPS. ASST. MGR.

Deanne E. DeWitt

### CUTTER/DRAPERS

Deanne E. DeWitt  
Gloria Pendlebury  
Mary Jane Wadley

### TAILOR

Gloria Pendlebury

### FIRST HAND

Diane Ogden

### COSTUME CRAFTS

Sarah Stewart

### WARDROBE SUPERVISOR

Jaynanne Meads

### STITCHERS

Sinead Anderson  
Alyssa Bybee  
Shannon McCurdy  
Sophia Ivory Smith  
Susanna Smith  
Kirsten Watkins

### HAIR & MAKEUP SUPERVISORS

Michaela Fordham

### LIVING LEGENDS

#### COSTUMER

Anna Catherine Hayes

### YOUNG AMBASSADORS COSTUMER

MaryLynn Schaeffer

### STUDENT PRODUCTIONS WARDROBE SUPERVISOR

Katie Hyatt

### AUDIO OPS. MGR.

Jeff Carter

### AUDIO RECORDING TECHNICIANS

Robi Aamondt  
Joseph Hansen  
Emily Higinbotham  
Caleb Hill  
Justin Liu  
Carrie Ostler  
Scott Smith  
Parker Robinson  
Corbin Sterling

### HOUSE AUDIO

OIT Audio-Visual Services

### VIDEO OPS. MGR.

Scott Hill

### VIDEO PRODUCTION SPECIALISTS

Cody Phillips  
Alex Sanders  
Emily Swenson  
Melissa Magley  
Nathanael King

### TOUR OPS. MGR.

John Ward Shurtleff

### ASST. TO TOUR OPS. MGR.

Brad Hill  
Brendan Smith

### ASST. TO YOUNG AMBASSADOR COSTUMER

Sarah Stewart

### ASST. TO LIVING LEGENDS COSTUMER

Maya Nitta

### BUSINESS MGR.

Kyle Nielsen

### ACCOUNTANTS

Matt Kirkpatrick  
Hao Feng

# DONORS

Mary Lou Fulton Chair Endowment  
Ira A. and Mary Lou Fulton

Dr. Marcus & Loren Bach Endowment  
Verda Mae Fuller Christensen Endowment  
Cherril B. Liptak Endowment  
O. Lee Walker Endowment

R. Don & Shirley Oscarson Endowment  
Ruth Smith Silver Endowment  
Divine Comedy Endowment  
Frank Whiting Endowment

Laurie and Bruce Bayne  
Clayton and Christine Christensen  
DAB Stewardship Trust  
Burt Dalton  
Joshua and Jenna Gubler  
Mary and Hooshang Farahnakian  
Michael and Virginia Handley  
David and Laura Harmon

Glen and Megan Jones  
David and Bianca Lisonbee  
George and Leslie Nelson  
Kyle H. Nielsen  
Ben and Dana Nye  
Richard and Nadene Oliver  
Nat and Jennifer M. Reed  
Michael and Becky Roundy

Ryan D. Roundy  
Scott and Liesl Shurtliff  
Rodger and Claudia Sorensen  
Sam and Diane Stewart  
Family Foundation  
Janet L. Swensen  
Rick and Amy White  
K. Perry Woolsey

Deanne and Paul DeWitt  
Eric and Cecelia Fielding  
Samuel and Barbara Fletcher  
Cynthia Hilger Foundation  
Calson Properties, etc.

Barta L. Heiner  
Benjamin and Melanie Hess  
Amy and McKay Jensen  
Thomas and Laura Lefler  
Eric and Anjanette Martinis

Jeffrey and Jana Parkin  
JoAnn and James Rogers  
Rory and Deanna Scanlon  
Sharon E. Swenson

Frank S. Allison  
Juila D. Ashworth  
William and Betty Bilson  
Kelly and Brian Bready  
Stephanie and Stephan  
Breinholt  
William and Tribly Cope

Patrick and Kathleen  
Debenham  
Timothy and Dana Edvalson  
Elizabeth C. Funk  
Jacob Gowans  
Priscilla and Peng Hoas  
Eric and Elaine Huntsman

Mike and Marianne Kraczek  
Emily and Hugh Pangorn  
Patrick and Diane Power  
Nat and Jennifer M. Reed  
Danna and Gregory  
Robinson

Thomas B. and Courtney  
Russell  
Eric and Annette Samuelsen  
Timothy and Linda Threlfall  
Karl and Brenda Wesson  
Ward and Mary Wright

Clifford and Stania Brennan  
Sarah K. Butler  
Klair N. Bybee  
Jean S. Chestnutt  
Richard and Antonia Clifford  
Craig and Gail Clyde  
Pheroze and Deenez Coachbuilder  
William and Tribly Cope  
Laura and Stephan Curry  
Lorna H. Daniels  
Allan N. Davis  
Michelle R. Evans

Rebekka Fogle  
Andrew Foree  
Heidi Hemming  
Sheril and Ann Hill  
Linea and Rafael Hoyos  
Keith E. Kopp  
Hondo B. Louis  
Nadine L. Lugo  
Joana Major  
Kenneth and Judith Mallett  
Mary and Michael McGrew  
Paul E. McGrew

Ben A. Myers  
Douglas Olsen  
Shannon and David Perez  
Patrick and Diane Power  
Gayanne Ramsden  
Craig and Shawnda Smith  
Matthew J. Taylor  
Russell T. Warne  
Brenton L. Williamson  
Kay and Brian Vigue  
Jonathan Ying

Erin Anderson  
Kenneth and Lorraine Crossley  
Michael and Evelyn Day

Deen Ferrell  
Kevin and Shelly Flint  
Brandon and Joann Kirk

John J. Kunzler  
Kyle Lindsay  
Nadine J. Lugo

Valerie Merit  
Adam T. White



The Department of Theatre and Media Arts expresses deep appreciation to our generous patrons. For information about giving to Theatre and Media Arts, visit [cfac.byu.edu](http://cfac.byu.edu) and click on the link "Giving to the College."

For information on how you can play a greater role in Theatre and Media Arts at BYU, contact Wade Hollingshaus, department chair, at 801-422-7768 or [wadeh@byu.edu](mailto:wadeh@byu.edu).