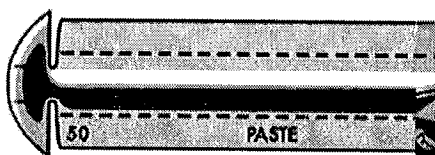
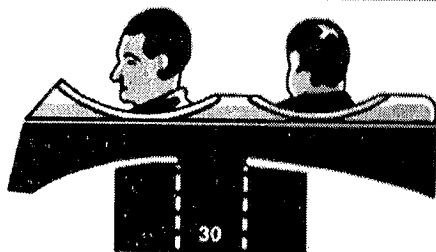


BYU COLLEGE OF FINE ARTS AND COMMUNICATIONS | DEPARTMENT OF THEATRE AND MEDIA ARTS

NELKE THEATRE

FLIGHT

BY OSCAR SAUL & LEWIS LANTZ
DIRECTED BY DEAN DUNCAN
& AMY PETERSON JENSEN



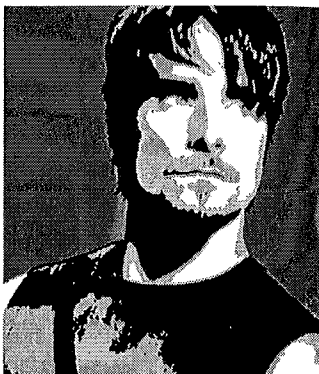
FEBRUARY
11-21
2004

★★★ Coming Next to the Pardoe Theatre ★★★

JOHN CAY'S THE BECCAR'S OPERA



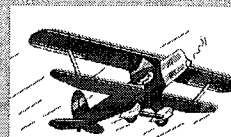
ADAPTED BY ADAPTED BY AD
MELISSA LEILANI LARSON
 DIRECTED BY DIRECTED BY
MEGAN SANBORN JONES
 MUSIC DIRECTION BY MUSIC D
KORIANNE ORTON JOHNSON
 CHOREOGRAPHY BY CHOREO
LIBBY MARSHALL



MAR. 24
 THROUGH
APR. 10
2004

In this exciting modern retelling of the most popular play of the 18th century, the classic battle between Polly Peachum and Lucy Lockett for the affections of Mac "the Knife" is fought on the stage of a music awards show. The line separating the underworld of beggars and thieves from the MTV world of rock stars will be crossed in a brilliant pastiche of dark intrigues, star-studded romances, high fashion statements. Electrifying performances will rock both your senses and your sense of complacency about the music you listen to every day.

Performances begin at 7:30 p.m., Apr. 3 at 8:30 p.m.
 Previews Mar. 24 & 25, Matinee Mar. 27, 2 p.m. No performance on March 30
 Fine Arts Ticket Office, 378-4322 or www.byu.edu/hfac



flights of imagination

Director's Note

3

points of departure

Director's Note

5

time files

Dramaturg's Note

6

company bios

8

FLIGHT

By Oscar Saul and Louis Lantz

The original script was adapted
 and enlarged by the company.

setting

A flight though our world's aviatory past

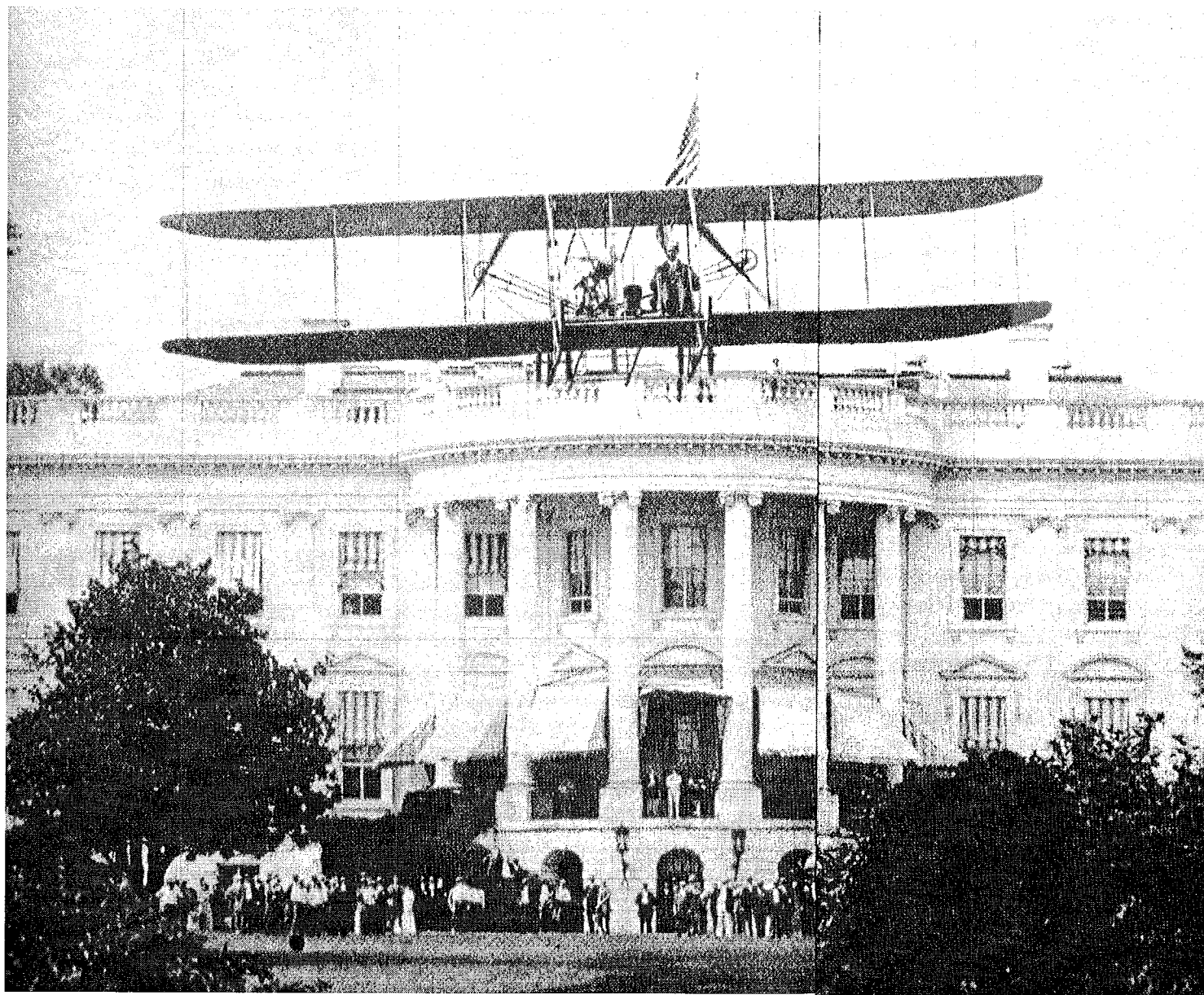
performers

Meredith A. Bak, Kim Hansen,
 Kimmy Howington, Megan Pugmire,
 Eleanor Rossell, Kristen Haskell Sansom,
 Amanda R. Von Der Lohe, Caitlin Wise

production staff

Co-directors Dean Duncan
 Amy Petersen Jensen
 Production Stage Manager Samuel M. Anderson
 Scenic Designer Heidi Hicken
 Costume Designer Emily Fickenwirth
 Hair and Make-up Designer Emily Fickenwirth
 Lighting Designer Heidi Schiers
 Dramaturg Roz Astle
 Assistant Stage Manager Sylvia Loehndorf
 Assistant Costume Designer Bethani Jensen
 Assistant Hair and Make-up Designer Bethani Jensen
 Media Coordinator Tyler Weston
 Media Compiler Mark Ellsworth
 Media Researcher Meredith A. Bak
 Nelke Theatre Stage Manager Bonnie Ann King

flights of imagination



I really like stories. That means not only the made-up kind, but also the ones that really happened. I also like how stories, both the made-up and true ones, can be told in all sorts of different ways. You can speak and I can listen, or we can act things out together. We can try to make our stories realistic, or call attention to the fact that we're telling them, and maybe change them as we do so.

Another thing I really like is how all these different approaches—fictional and non-fictional, realistic, and really stylized—can all be true, and can tell us about our friends, our world, and ourselves.

As you know, this play is about flight, and it's got a lot of great flying stories in it. It's also got a lot of true things in it. It has stories about things that people invented and things that really happened, and it tries lots of different ways to tell us about them all. We like that, and we hope you do too. We've learned that when you try these different things you get both entertainment and education, with the performers and the audience all helping each other to have fun and grow at the same time. We're glad to have you with us.

—Dean Duncan

the company cast

MEREDITH A. BAK, Couer d'Alene, ID, is a senior majoring in media arts studies.

KIM HANSEN, American Fork, UT, is a junior majoring in theatre education. Recent credits include Anne in *Cheaper by the Dozen* at the Villa Playhouse in Springville, UT; Baker's Wife in *Into the Woods* at American Fork High School, and ensemble member in *A Christmas Carol* at Orem's Hale Center Theater.

KIMMY HOWINGTON is a senior majoring in theatre education. Recent credits include Lady Capulet in *Romeo and Juliet* at BYU-Idaho and Santa's helper in *Santa Clause Is Coming to Town* with Effie Green Elementary School's second grade.

MEGAN PUGMIRE, Shoreline, WA, is a graduate student in theatre history, theory, and criticism.

ELEANOR ROSSELL, La Crescenta, CA, is a junior majoring in theatre. Recent credits include Ado Annie in *Oklahoma!*, Miss Skillon in *See How They Run*, and Edith in *Blithe Spirit* at the Playmill Theatre in West Yellowstone, MT.

KRISTIN HASKELL SANSOM, Orem, UT, is a senior majoring in acting. Recent BYU credits include the Old Woman in *Cathleen Ni Houllian*, ensemble member in *The Wind in the Willows*, and ensemble member in *No Exit*.

AMANDA R. VON DER LOHE, Roseville, CA, is a sophomore studying theatre. Recent credits include Erotium in *Twin Menaechmi*, Nurse in *Medea*, and Rosavra in *Life Is a Dream* at Roseville High School in Roseville, CA.

CAITLIN WISE, San Diego, CA, is a junior majoring in acting. Recent credits include Toad in *The Wind in the Willows*, Gillian in *Bell, Book and Candle*, at BYU, and the White Witch in the upcoming production of *The Lion, the Witch and the Wardrobe*. Caitlin was also featured in the BYU Law School film *Reading Cases Like a Lawyer*.

production staff

production stage manager

SAMUEL M. ANDERSON, St. George, UT, is a senior majoring in theatre studies with an emphasis in directing and stage management. Recent assistant stage managing credits include *Wizard of Oz* and *King and I* at Tuachan in Ivins, UT, and *Abinadi* at BYU.

scenic designer

HEIDI HICKEN, South Jordan, UT, is a senior majoring in theatre studies with an emphasis in scenic art. Recent scenic artist credits include *Abinidi* and *Misalliance* at BYU, and *Madama Butterfly* and *Nabucco* with Utah Festival Opera in Logan. She also designed the set for last year's production of *Rule a Wife and Have a Wife*.

costume, hair, and make-up designer

EMILY FICKENWIRTH, Lewiston, ID, is a senior majoring in costume design, and minoring in music. Recent credits includes assistant costumer for *Carmen* and *Archipelago* at BYU, and assistant wardrobe supervisor/stitcher for the Utah Shakespearean Festival in Cedar City.

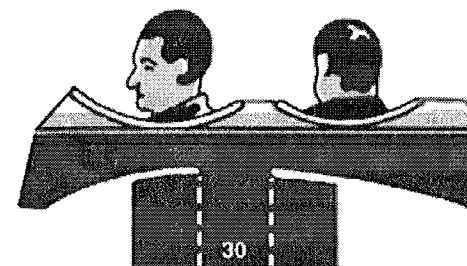
assistant stage manager

SYLVIA LOEHNDORF, Henderson, NV, is a senior majoring in theatre studies and minoring in English. Recent stage management credits include the *Tempest* with Actors' Repertory Theatre Ensemble, *The Way We're Wired* at the Center Street Theatre, *Abinadi* at BYU, and *Backs to the Wind*

at the University of Nevada at Las Vegas.

assistant costume, hair, and make-up designer

BETHANY JENSEN, Aberdeen, WA, is a senior studying landscape and urban horticulture. She currently works as a stitcher in the BYU costume studio, and was the assistant costume designer on *The Winter's Tale* and *Soft Shoe* at BYU.



This production is entered in the Kennedy Center American College Theater Festival (KC/ACTF). The aims of this national theater education are to identify and promote quality in college-level theater production. To this end, each production entered is eligible for a response by a regional KC/ACTF representative, and certain students are selected to participate in KC/ACTF programs involving awards, scholarships, and special grants for actors, playwrights, designers, and critics at both the regional and national levels.

Productions entered on the participating level are eligible for inclusion at the KC/ACTF regional festival and can also be considered for invitation to the KC/ACTF national festival at the John F. Kennedy Center for the Performing Arts in Washington, D.C., in the spring of 2004.

Last year, more than 1,000 theater productions and 19,000 students participated in KC/ACTF nationwide. By entering into this production, our department is sharing the KC/ACTF goals to help college theater grow and to focus attention on the exemplary work produced in college and university theaters across the nation.

KC/ACTF

KENNEDY CENTER AMERICAN COLLEGE THEATER FESTIVAL

PRESENTED AND PRODUCED • The John F. Kennedy Center for the Performing Arts
SUPPORTED IN PART • The Kennedy Center Corporate Fund • The US Department of Education • Delta Airlines • The National Committee for the Performing Arts