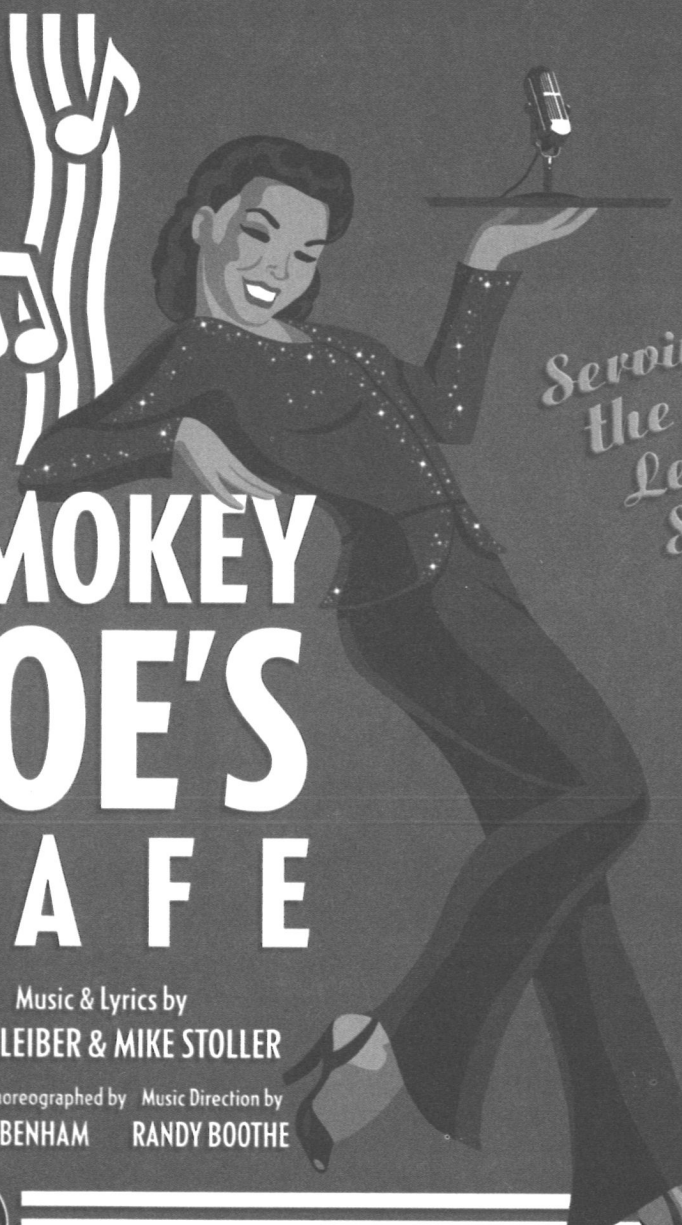


BYU COLLEGE OF FINE ARTS & COMMUNICATIONS | DEPARTMENT OF THEATRE & MEDIA ARTS
CO-PRODUCED WITH THE SCHOOL OF MUSIC & DEPARTMENT OF DANCE

PARDOE THEATRE




*Serving up
the songs of
Leiber and
Stoller*

SMOKEY JOE'S CAFE

Music & Lyrics by
JERRY LEIBER & MIKE STOLLER

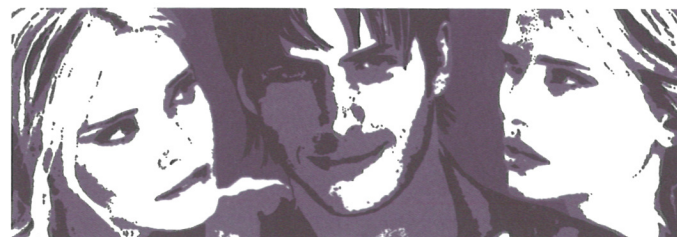
Directed & Choreographed by **PAT DEBENHAM** Music Direction by **RANDY BOOTHE**

JAN. 21
THROUGH
FEB. 7
2004

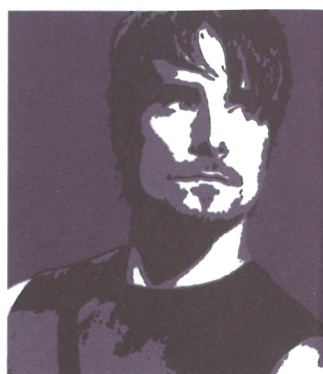
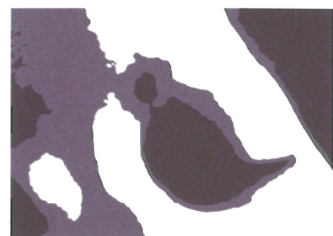


★ ★ ★ Coming Next to the Pardoe Theatre ★ ★ ★

JOHN CAY'S THE BEGGARS OPERA



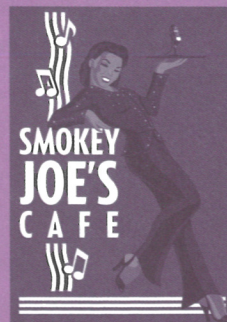
ADAPTED BY ADAPTED BY AD
MELISSA LEILANI LARSON
DIRECTED BY DIRECTED BY
MEGAN SANBORN JONES
MUSIC DIRECTION BY MUSIC D
KORIANNE ORTON JOHNSON
CHOREOGRAPHY BY CHOREO
LIBBY MARSHALL



MAR. 24
THROUGH
APR. 10
2004

★ In this exciting modern retelling of the most popular play of the 18th century, the classic battle between Polly Peachum and Lucy Lockett for the affections of Mac "the Knife" is fought on the stage of a music awards show. The line separating the underworld of beggars and thieves, and the MTV world of rock stars will be crossed in a brilliant pastiche of dark intrigues, star-studded romances, high fashion statements and electrifying performances that will rock both your senses and your sense of complacency about the music you listen to every day.

Performances begin at 7:30 p.m., Apr. 3 at 8:30 p.m.
Previews Mar. 24 & 25, Matinee Mar. 27, 2 p.m.
Fine Arts Ticket Office 378-4322, www.byu.edu/hfac



performers (in order of appearance)

Brooke Marie Cenicola, Alexander Boye,
Jarrett Burns, Jeff Pew, Preston K. Sadleir,
Summer Naomi Wood, Jonathan Pinney,
Lisanne Christensen, Clotile Bonner, Yunga Webb

production staff

Director/Choreographer Pat Debenham
Associate Director/Music Director Randy Boothe
Associate Choreographer Lisa Stoddard
Production Stage Manager Emily Provance
Costume Designer Janet L. Swenson
Scenic Designer Richard J. Clifford
Lighting Designer J. Brent Pritchett
Sound Designer Troy Streeter
Media Technical Director Tyler Weston
Dramaturgs Char Nelson,
Denise Cutliff,
Elizabeth Moss
Hair and Co-Make-up Designer Oliver Gaag
Co-Make-up Designer Brittany Belinski
Assistant Stage Managers Morgan Bills Hagey,
Sarah Ratliff,
Kayela Seegmiller
Assistant Costume Designers Chelsea Cooper,
Andrea Cottam,
Rory Scanlon,
Kristen Marie Shirts
Assistant Lighting Designers Patrick W. Kintz,
Heidi Schiers
Light Board Programmer/Operator Josh Gubler

musical numbers

2

better times Director's Note

3

dramaturgs' notes

5

study guide

8

the company Cast & Production Staff Bios

15

band members

Piano/Conductor Michael Leavitt
Synthesizer Alan Sackett
Bass Ross Boothe
Drums Rob Whalen
Guitars Jamey Kearl
Saxophone Randy Brown

Smokey Joe's Cafe is presented through special arrangement with
The Rodgers & Hammerstein Theatre Library,
229 West 28th Street, 11th Floor, New York, NY 10001

setting

Neither here nor there, between now and then

musical numbers

act I

Neighborhood
Young Blood
Falling
Ruby Baby
Dance with Me
Neighborhood (Reprise)
Keep On Rollin'
Searchin'
Kansas City
Trouble
Love Me / Don't
Fools Fall in Love
Poison Ivy
Don Juan
Shoppin' for Clothes
I Keep Forgettin'
On Broadway
D. W. Washburn
Saved

act II

Baby, That is Rock & Roll
Yakety Yak
Charlie Brown
Stay a While
Pearl's a Singer
Teach Me How to Shimmy
Smokey Joe's Café
Loving You
Treat Me Nice
Hound Dog
I'm a Woman
There Goes My Baby
Love Potion No. 9
Jailhouse Rock
Fools Fall in Love (Reprise)
Spanish Harlem
I (Who Have Nothing)
Neighborhood (Reprise #2)
Stand By Me

there will be one ten-minute intermission

sources of photographs in video projections

photographs:

Photos by Rudy Burkhardt—
permission granted by
Yvonne Jacquette

Photos by students of the
Bread and Roses High
School in Harlem

Personal photos of Darius
Gray

Photo Archives
Utah State Historical Society

Special Collections
Harold B. Lee Library

Photographs and Prints
Division, Schomburg
Center for Research in
Black Culture, New York
Public Library; Astor, Lenox
and Tilden Foundations

www.brumm.com

www.loc.org

books:

Black Americana
by Richard A. Long

Children of Relocation
by Catherine A. Welch

The Civil Rights Movement
by Anna Kosof

Everyday People
by Alice Faye Duncan

Eyes on the Prize
by Juan Williams

In This Proud Land
by Bernard Wolf

The March on Washington
by James Haskins

Old News: Resurrection City
by Jill Freedman

better times

many of us long for what we perceive to be simpler times. *Smokey Joe's Cafe*, through song and dance, allows us to connect to the rhythms and melodies of the past—a past that, though imperfect, was perhaps more innocent and less cynical.

The melodies and lyrics of *Smokey Joe's* are heartfelt. These are our songs, our parents' songs, and perhaps our grandparents' songs. They bring to mind the honey-smooth voices of Motown, the puppy-love pain in the songs of Brenda Lee, the rawness of Janis Joplin, and the vitality of Elvis. These are great songs of entertainment. The lyrics, though, not only speak of young love that gets under your skin and itches like "Poison Ivy," but especially of a revolution that took place against social injustices of the past. These are songs that ask us to stand by each other as brother and sister, not only in musical harmony but united to improve the world for future generations.

We hope as cast and production team that your evening will be brighter for having been here. As you leave tonight, we invite you, in a spirit of sharing, to reach out and, as the final song of the *Smokey Joe's Cafe* suggests, stand by those who are afraid and in the dark, for you could be the "only light [they] see."

—Pat Debenham & Randy Boothe

about the show

Originally opened March 2, 1995, at the Virginia Theatre in New York City

Broadway's longest running musical revue: 2,037 performances

Awards:

- 1996 Winner of the Grammy Award for Best Musical Show Album
- Nominated for seven Tony Awards
- Nominated for two Olivier Awards

Smokey Joe's Cafe—a musical celebration of Leiber and Stoller—affectionately dubbed by some reviewers as the Rodgers and Hammerstein of Rock and Roll.

sources

www.ibdb.com
www.talkinbroadway.com

you're invited

At every Thursday performance, **meet the company** and join us in a question and answer session following the show. After the Saturday matinee join us for a **university panel** discussion. And don't miss the **department forum**, Thursday, Jan. 29, 11 a.m. in the Nelke Theatre.



Enjoy bistro style cuisine at this café on the mezzanine of the BYU Museum of Art

Fall Mon. - Fri. 11:00am - 2:00pm
Spring/Summer Mon. - Fri. 11:30am - 1:30pm
Closed for BYU Devotionals

Phone: 378-8217
www.byu.edu/dining/moacafe

TUXEDO WEARHOUSE

All Tuxedos One Low Price
\$37.00 Includes Shoes

WEDDING SPECIAL

Groom's rental **FREE** with
5 or more complete tuxedos

We do western weddings, too!

Mon-Fri: 10-6:30 • Sat: 10-3
(801)226-7681 • 155 W. 400 N. Orem



the company

cast

CLOTILE BONNER (SELECTED PERFORMANCES), Mesa, AZ, is a freshman in theatre studies with an emphasis in acting. Recent credits include Elain Harper in *Arsenic and Old Lace* and Narrator in *Joseph...* at Mountain View High School in Mesa, AZ, and a member of the 2003-04 BYU Young Ambassadors.

ALEXANDER BOYE, London, England, signed with Universal Records in 1994 with a boy-band, Awesome, and sold over 500,000 copies with hits in over 15 European countries. Alexander has performed with such artists as N'Sync, Backstreet Boys, Missy Elliott, and Mary J. Blige. Recent Utah credits include Jim in *Big River* at the Hale Centre Theatre in West Valley City, UT, and Frederick Douglass in *Civil War* at Rogers Memorial Theatre in Centerville, UT.

JARRETT BURNS, Tifton, GA, is a sophomore. Recent BYU credits include Concert Choir and the Young Ambassadors.

BROOKE MARIE CENICOLA, New York, NY, is a sophomore studying music/dance/theatre. Recent credits include the original Off-Broadway production of *The Violence Project*. She was also featured at the New York Stage and Film Festival, *American Rock* at Six Flags Over Georgia, and *Joseph...* in Atlanta, GA.

LISANNE CHRISTENSEN, Alpine, UT, is a junior majoring in music/dance/theatre. Recent credits include the BYU Young Ambassadors' productions of *Curtaintime* and *Broadway Rhythm*, Beth in *A Lie of the Mind*, and Ella in *Curse of the Starving Class* at Carnegie Mellon University.

JEFF PEW, San Jose, CA, is a freshman studying music/dance/theatre. Recent credits include Curly in *Oklahoma* at Lincoln High School in San Jose, CA. Jeff was named best actor in a musical for his portrayal of Marius in *Les Miserables* by the American Musical Theatre in the Bay Area.

JONATHAN PINNEY, Granite Bay, CA, is a junior majoring in media music. Recent credits include the 2003-04 company of the BYU Young Ambassadors.

PRESTON K. SADLEIR, Salt Lake City, UT, is a freshman majoring in music/dance/theatre and media arts. Preston toured Europe with the pop group T-Minus Friday, and has performed for the past three seasons as an entertainer at Lagoon in Farmington, UT.

YUNGA WEBB (SELECTED PERFORMANCES), Las Vegas, NV, is a junior majoring in sociology with a minor in music. Recent credits include Sarah's Friend/Understudy in *Ragtime* at Pioneer Theatre Company in Salt Lake City, UT, Potiphar's Wife in *Joseph...*, and a slave in *Big River* at Rogers Memorial Theatre in Centerville, UT. Yunga was also a member of the 2002-03 BYU Young Ambassadors.

SUMMER NAOMI WOOD, Salt Lake City, UT, is a senior majoring in music/dance/theatre. Recent credits include three-year's touring with the BYU Young Ambassadors, Jenny in *Funny Girl* at Sundance, wife/dancer in *Joseph...*, and dancer/chorus in *Seven Brides for Seven Brothers* at Tuachan in St. George, UT.

production staff

director/choreographer

PAT DEBENHAM, Orem, UT, received his MA from UCLA and is a professor of modern dance and music theatre at BYU. Pat has been actively involved as a performer, teacher, and creator of dance for 30 years. Credits include twelve main-stage musicals at BYU, and performing and choreographing at Sundance, SCERA, and Provo Theatre Company.

associate director/music director

RANDY BOOTHE, Spanish Fork, UT, is an associate professor in the School of Music,

and chair of the music/dance/theatre steering committee. He is the artistic director for the BYU Young Ambassadors, and received the distinguished alumni award in 2000 from BYU-Hawaii. Recent credits include music director for *Crazy for You* at BYU, co-director for *Light of the World* at the Conference Center in Temple Square, director of the *Sesquicentennial Celebration* in Cougar Stadium, and show director for Walt Disney Productions in both Disneyland and Walt Disney World.

associate choreographer

LISA STODDARD, St. George, UT, received her BA in performance from the University of Nevada-Las Vegas, and an MA in choreography from BYU. She has taught independent choreography for 12 years winning National and Regional awards.

production stage manager

EMILY PROVANCE, Houston, TX, is a senior majoring in theatre studies. Recent BYU credits include stage managing *Smart Single Guys* and *Archipelago*, and assistant stage managing *School for Wives*. Emily also assistant stage managed *Passing of the Third Floor Back* at the Little Brown Theater in Springfield, UT.

costume designer

JANET L. SWENSON, Seattle, WA, is a professor of costume design and coordinator of design and technology at BYU. She received her BA and MA from BYU in theatre history and her MFA from the University of Utah in costume design. Recent credits include costume design for *Measure for Measure*, *As You Like It*, and *Peter Pan* at the Utah Shakespearean Festival in Cedar City, UT, *Fiddler on the Roof* at Tuachan in St. George, UT, and the *King and I* and *Guys and Dolls* at the Skylight Opera in Milwaukee, WI. Janet has designed over 200 productions throughout her 30 years at BYU.

scenic designer

RICHARD J. CLIFFORD, Shoshone, ID, is full-time faculty at the Salt Lake Community College and adjunct faculty at

BYU. He received his MFA from BYU in theatre design and technology. Richard is the resident scenic designer for Provo Theatre Company, and was the scenic/costume designer for *Carmen* at BYU.

lighting designer

J. BRENT PRICHETT, Orem, UT, is a senior majoring in theatre studies, with an emphasis in lighting design. Recent credits include master electrician for *The Wizard of Oz* and *The King and I* at Tuacahn in St. George, UT, and lighting designer for *Abinadi* at BYU. Brent was awarded the O. Lee Walker Award in 2002 for outstanding lighting design for his work on the BYU productions of *Soft Shoe* and *The Three Sisters*.

media technical director

TYLER WESTON, Logan, UT, is a senior majoring in media arts studies. Recent BYU credits include media technical director for *Smart Single Guys* and *Archipelago*, associate producer for the TV production of *Hancock County*, and technical director of the BYU sitcom *So Much in Love*.

dramaturg

CHAR NELSON, Provo, UT, received a BFA in acting from the University of Utah and an MA in English from Middlebury College. Recent credits include directing *The Wind in the Willows* and the role of Rebecca Nurse in *The Crucible* at BYU.

dramaturg

DENISE CUTLIFF, Saginaw, MI, is a senior majoring in theatre studies, and minoring in English. Acting credits include *The Wind in the Willows*, *Voices from Black Canyon*, *Electra*, and *I am Jane* at BYU. Other BYU credits include stage managing *No Exit* and co-adapting *The Blacker the Berry*.

hair designer/co-make-up designer

OLIVER GAAG, Geneva, Switzerland, is a senior majoring in music/dance/theatre. Recent performing credits include Zangler in *Crazy for You* at BYU, Sparky in *Forever Plaid* at Hale Center Theater Orem, Beadle

in *Sweeney Todd* at Actor's Repertory Theatre Ensemble, Mordred in *Camelot* at Hale Center Theater Orem, and ensemble in *She Loves Me* at BYU.

assistant stage manager

MORGAN BILLS HAGEY, Wausan, WI, is a senior majoring in theatre studies. Recent credits include Aurora in the BYU Mask Club production of *Wit's End*, and Voice #5 in *Bang, Bang, You're Dead* at the Villa Theatre in Springfield, UT.

assistant stage manager

SARAH RATLIFF, Little Rock, AK, is a senior majoring in theatre studies with a minor in psychology. Recent credits include Kendra in *Peculiarities* at the Villa Playhouse in Springfield, UT.

assistant stage manager

KAYELA SEEGMILLER, Henderson, NV, is a junior majoring in theatre with a minor in history. Recent credits include stage manager of *Stones* at the Center Street

Theatre in Orem, UT, and dramaturg of *Papa Married a Mormon* at BYU.

assistant costume designer

CHELSEA COOPER, Blue Springs, MO, is a senior majoring in psychology. Recent credits include costumer of *Snoopy* and *Taming of the Shrew* in Blue Springs, MO.

assistant costume designer

ANDREA COTTAM, CA, is a senior majoring in theatre. Recent BYU credits include assistant costume designer of *Abinadi* and *The Trojan Women*, and dresser for *King Lear*.

assistant costume designer

KRISTEN MARIE SHIRTS, Provo, UT, is a junior majoring in theatre studies with an emphasis in costume design. Recent credits include costume design for the BYU Mask Club production of *Cathleen ni Houlihan* and a stitcher for five seasons with the Utah Shakespearean Festival in Cedar City, UT. cb

This production is entered in the Kennedy Center American College Theater Festival (KC/ACTF). The aims of this national theater education are to identify and promote quality in college-level theater production. To this end, each production entered is eligible for a response by a regional KC/ACTF representative, and certain students are selected to participate in KC/ACTF programs involving awards, scholarships, and special grants for actors, playwrights, designers, and critics at both the regional and national levels.

Productions entered on the participating level are eligible for inclusion at the KC/ACTF regional festival and can also be considered for invitation to the KC/ACTF national festival at the John F. Kennedy Center for the Performing Arts in Washington, D.C., in the spring of 2004.

Last year, more than 1,000 theater productions and 19,000 students participated in KC/ACTF nationwide. By entering into this production, our department is sharing the KC/ACTF goals to help college theater grow and to focus attention on the exemplary work produced in college and university theaters across the nation.

KC/ACTF
KENNEDY CENTER AMERICAN COLLEGE THEATER FESTIVAL

PRESENTED AND PRODUCED - The John F. Kennedy Center for the Performing Arts
SUPPORTED IN PART - The Kennedy Center Corporate Fund - The US Department of Education - Delta Airlines - The National Committee for the Performing Arts